

Datasheet for ABIN1574004

**anti-WISP2 antibody****1** Image[Go to Product page](#)

## Overview

Quantity:	40 µg
Target:	WISP2
Reactivity:	Please inquire
Host:	Mouse
Clonality:	Monoclonal
Conjugate:	This WISP2 antibody is un-conjugated
Application:	Western Blotting (WB), ELISA

## Product Details

Immunogen:	WISP2 full length recombinant protein with GST tag
Clone:	5D11E11
Isotype:	IgG
Purification:	Protein A affinity column

## Target Details

Target:	WISP2
Alternative Name:	WISP2 ( <a href="#">WISP2 Products</a> )
Background:	WISP-2 is a member of the connective tissue growth factor/cysteine-rich 61/nephroblastoma overexpressed (nov) (CCN) family and is upregulated in the mouse mammary epithelial cell line C57MG transformed by Wnt-1 and in several non-invasive human breast tumor cell lines. WISP-2 expression is enhanced by important modulators of human breast cancer cell proliferation

## Target Details

such as estrogen, progesterone and epidermal growth factor (EGF) in MCF-7 cells. These effects, inhibited by appropriate antagonists, indicate that steroids and growth factor-induced upregulation of WISP-2 may be mediated through receptors. WISP2 gene may be downstream in the WNT1 signaling pathway that is relevant to malignant transformation. Its expression in colon tumors is reduced while the other two WISP members are overexpressed in colon tumors. It is expressed at high levels in bone tissue, and may play an important role in modulating bone turnover.

Pathways: [WNT Signaling, Growth Factor Binding](#)

## Application Details

Application Notes: Working concentrations for specific applications should be determined by the investigator. The appropriate concentrations may be affected by secondary antibody affinity, antigen concentration, the sensitivity of the method of detection, temperature, the length of the incubations, and other factors. The suitability of this antibody for applications other than those listed below has not been determined. The following concentration ranges are recommended starting points for this product.

ELISA: 0.05-0.2 µg/mL

Western blot: 0.1-1.0 µg/mL

Other applications: user-optimized

Restrictions: For Research Use only

## Handling

Format: Lyophilized

Buffer: PBS, pH 7.4, containing 0.02 % sodium azide

Preservative: Sodium azide

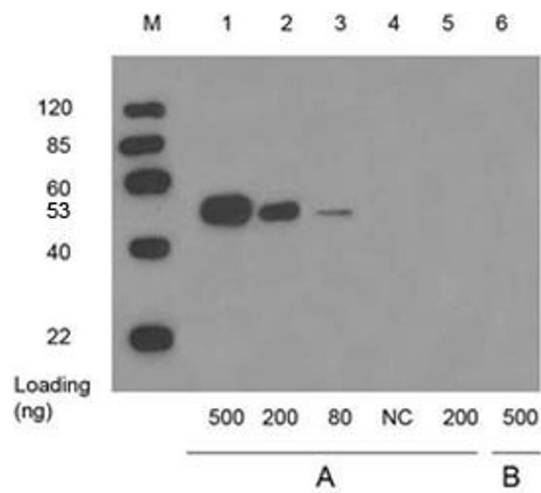
Precaution of Use: WARNING: Reagents contain sodium azide. Sodium azide is very toxic if ingested or inhaled. Avoid contact with skin, eyes, or clothing. Wear eye or face protection when handling. If skin or eye contact occurs, wash with copious amounts of water. If ingested or inhaled, contact a physician immediately. Sodium azide yields toxic hydrazoic acid under acidic conditions. Dilute azide-containing compounds in running water before discarding to avoid accumulation of potentially explosive deposits in lead or copper plumbing.

Storage: 4 °C/-20 °C

Handling

Storage Comment: The antibody is stable in lyophilized form if stored at -20°C or below. The reconstituted antibody can be stored for 2-3 weeks at 2-8°C. For long term storage, aliquot and store at -20°C or below. Avoid repeated freezing and thawing cycles.

Images



**Western Blotting**

**Image 1.** Lane 1,2,3 and 6: WISP2 full length recombinant protein with GST tag in 293 cell lysateLane 4: 10 µg 293 cell lysateLane 5: GST proteinPrimary antibody: A: 1 µg/mL Mouse Anti-WISP2 Monoclonal Antibody (ABIN398657) B: Negative controlSecondary antibody: Goat Anti-Mouse IgG (H&L) [HRP] Polyclonal Antibody (ABIN398387, 1: 10,000) The signal was developed with LumiSensor™ HRP Substrate Kit (ABIN769939)