



[Go to Product page](#)

Datasheet for ABIN1574026

anti-HTR2A antibody (3rd Cytoplasmic Loop)

1 Image

Overview

Quantity:	40 µg
Target:	HTR2A
Binding Specificity:	3rd Cytoplasmic Loop
Reactivity:	Human
Host:	Rabbit
Clonality:	Polyclonal
Conjugate:	This HTR2A antibody is un-conjugated
Application:	Western Blotting (WB), ELISA

Product Details

Immunogen:	Synthetic peptide (KLH-coupled) derived from the third intracellular domain loop of human 5HT2A receptor .
Isotype:	IgG
Specificity:	Rabbit Anti-5HT2A Receptor Polyclonal Antibody detects endogenous levels of 5HT2A receptor.
Purification:	Immunoaffinity chromatography

Target Details

Target:	HTR2A
Alternative Name:	5HT2A Receptor (HTR2A Products)
Background:	5HT are receptors for neurotransmitter and peripheral signal mediator serotonin. It is also

Target Details

known as 5-hydroxytryptamine or 5HT. 5HT receptors mediate the effects of serotonin as the endogenous ligand and of a broad range of pharmaceutical and hallucinogenic drugs. Specifically, 5HT receptors affect the release of other neurotransmitters such as glutamate, dopamine, and GABA as well as their activities. 5HT_{2A} is a type of receptor belongs to the serotonin receptor family and is one member of G protein coupled receptor (GPCR) family. 5HT_{2A} is involved in the contraction of tracheal smooth muscle, bronchoconstriction, and the control of aldosterone production. The receptor also happens to be necessary for the spread of the human polyoma virus called JC virus. 5HT_{2A} is widely expressed throughout the central nervous system (CNS). It is expressed near most of the serotonergic terminal rich areas, including neocortex and olfactory tubercle. Increased stimulation of 5HT_{2A} receptors seems to oppose the therapeutic actions of increased stimulation of other serotonin receptors in antidepressant and anxiolytic treatments. Rabbit Anti-5HT_{2A} Receptor Polyclonal Antibody is developed in rabbit hosts using a KLH-coupled synthetic peptide derived from the third intracellular domain loop of human 5HT_{2A} receptor (Swiss Prot: P28223).

Pathways: [JAK-STAT Signaling](#), [Inositol Metabolic Process](#), [Regulation of Carbohydrate Metabolic Process](#)

Application Details

Application Notes: Working concentrations for specific applications should be determined by the investigator. The appropriate concentrations may be affected by secondary antibody affinity, antigen concentration, the sensitivity of the method of detection, temperature, the length of the incubations, and other factors. The suitability of this antibody for applications other than those listed below has not been determined. The following concentration ranges are recommended starting points for this product.

ELISA: 0.05-0.2 µg/mL

Western blot: 0.5-2 µg/mL

Other applications: user-optimized

Restrictions: For Research Use only

Handling

Format: Lyophilized

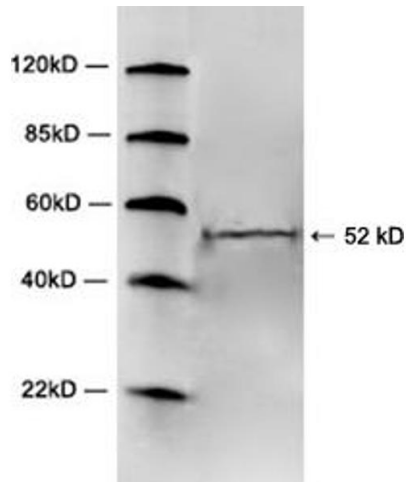
Buffer: PBS, pH 7.4, containing 0.02 % sodium azide

Preservative: Sodium azide

Handling

Precaution of Use:	WARNING: Reagents contain sodium azide. Sodium azide is very toxic if ingested or inhaled. Avoid contact with skin, eyes, or clothing. Wear eye or face protection when handling. If skin or eye contact occurs, wash with copious amounts of water. If ingested or inhaled, contact a physician immediately. Sodium azide yields toxic hydrazoic acid under acidic conditions. Dilute azide-containing compounds in running water before discarding to avoid accumulation of potentially explosive deposits in lead or copper plumbing.
Storage:	4 °C/-20 °C
Storage Comment:	The antibody is stable in lyophilized form if stored at -20°C or below. The reconstituted antibody can be stored for 2-3 weeks at 2-8°C. For long term storage, aliquot and store at -20°C or below. Avoid repeated freezing and thawing cycles.

Images



Western Blotting

Image 1. Western blot analysis of mouse brain tissue lysate using 1 µg/mL Rabbit Anti-5HT2A Receptor Polyclonal Antibody (ABIN398705) The signal was developed with IRDye™ 800 Conjugated Goat Anti-Rabbit IgG.