

Datasheet for ABIN1574039 **anti-Calcineurin A antibody (AA 450-500)**

3 Images

[Go to Product page](#)

Overview

Quantity:	40 µg
Target:	Calcineurin A (CAN)
Binding Specificity:	AA 450-500
Reactivity:	Rat
Host:	Rabbit
Clonality:	Polyclonal
Conjugate:	This Calcineurin A antibody is un-conjugated
Application:	Western Blotting (WB), ELISA

Product Details

Immunogen:	Synthetic peptide (KLH-coupled) within AA 450-500 of human calcineurin A protein
Isotype:	IgG
Specificity:	Rabbit Anti-Calcieneurin A Polyclonal Antibody detects endogenous levels of calcineurin A protein. Sequence homology predicts that it will also react with rat calcineurin A.
Cross-Reactivity (Details):	Rabbit Anti-Calcieneurin A Polyclonal Antibody detects endogenous levels of calcineurin A protein. Sequence homology predicts that it will also react with rat calcineurin A.
Purification:	Immunoaffinity chromatography

Target Details

Target:	Calcineurin A (CAN)
---------	---------------------

Target Details

Alternative Name:	Calcineurin A (CAN Products)
Background:	<p>Calcineurin is a heterodimer protein that binds to Ca²⁺. A Ca²⁺/calmodulin-regulated protein phosphatase, it is composed of a 19 kD calcineurin B (CnB) and a 61 kD calmodulin-binding catalytic subunit, calcineurin A (CnA). Calcineurin A was first detected in skeletal muscle and brain tissues, but it has since been found in all cell types, from yeast to mammalian. Calcineurin A may be responsible for the calmodulin activation property of calcineurin. There is evidence suggesting that alternative splicing could give rise to different forms of calcineurin A. Rabbit Anti-Calcineurin A Polyclonal Antibody is developed in rabbit hosts using a KLH-coupled synthetic peptide within residues 450-500 of human calcineurin A protein (Swiss Prot: Q08209).</p>

Application Details

Application Notes:	<p>Working concentrations for specific applications should be determined by the investigator. The appropriate concentrations may be affected by secondary antibody affinity, antigen concentration, the sensitivity of the method of detection, temperature, the length of the incubations, and other factors. The suitability of this antibody for applications other than those listed below has not been determined. The following concentration ranges are recommended starting points for this product.</p> <p>ELISA: 0.05-0.2 µg/mL</p> <p>Western blot: 0.5-1 µg/mL</p> <p>Other applications: user-optimized</p>
Restrictions:	For Research Use only

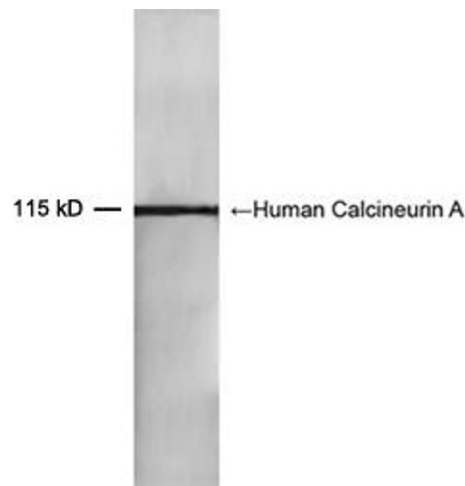
Handling

Format:	Lyophilized
Buffer:	PBS, pH 7.4, containing 0.02 % sodium azide
Preservative:	Sodium azide
Precaution of Use:	<p>WARNING: Reagents contain sodium azide. Sodium azide is very toxic if ingested or inhaled. Avoid contact with skin, eyes, or clothing. Wear eye or face protection when handling. If skin or eye contact occurs, wash with copious amounts of water. If ingested or inhaled, contact a physician immediately. Sodium azide yields toxic hydrazoic acid under acidic conditions. Dilute azide-containing compounds in running water before discarding to avoid accumulation of potentially explosive deposits in lead or copper plumbing.</p>

Handling

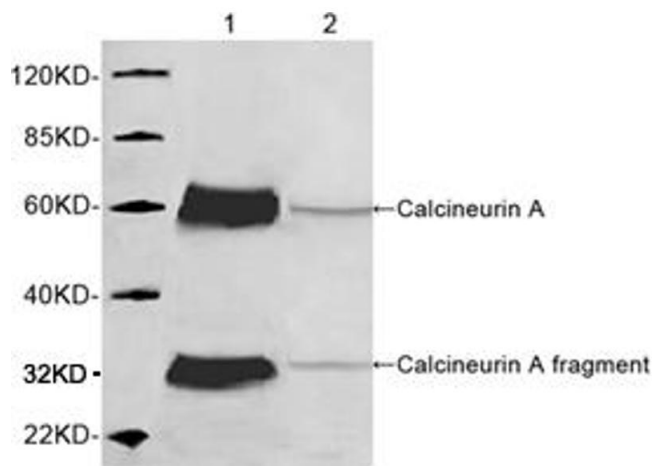
Storage:	4 °C/-20 °C
Storage Comment:	The antibody is stable in lyophilized form if stored at -20°C or below. The reconstituted antibody can be stored for 2-3 weeks at 2-8°C. For long term storage, aliquot and store at -20°C or below. Avoid repeated freezing and thawing cycles.

Images



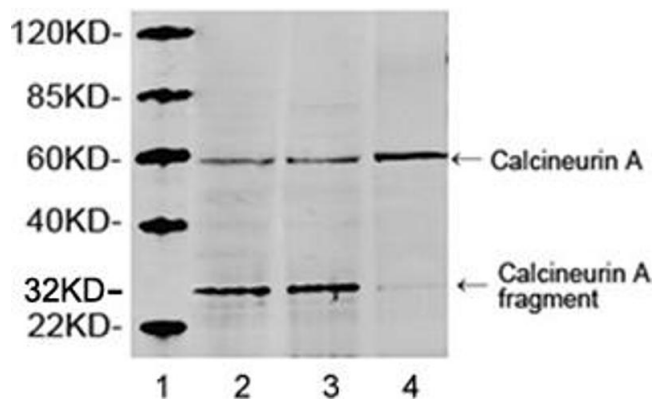
Western Blotting

Image 1. Western blot analysis of recombinant human Calcineurin A protein using 0.5 µg/mL Rabbit Anti-Calcineurin A Polyclonal Antibody (ABIN398733) The signal was developed with IRDye™ 800 Conjugated Goat Anti-Rabbit IgG.



Western Blotting

Image 2. Western blot analysis of mouse brain tissue lysate using 1 µg/mL Rabbit Anti-Calcineurin A Polyclonal Antibody (ABIN398733) Lane 1: Rabbit Anti-Calcineurin A Polyclonal Antibody Lane 2: Rabbit Anti-Calcineurin A Polyclonal Antibody pre-incubated with immunizing peptide The signal was developed with IRDye™ 800 Conjugated Goat Anti-Rabbit IgG.



Western Blotting

Image 3. Lane 1: Marker Lane 2: Hela cell lysate Lane 3: HEK293 cell lysate Lane 4: NIH/3T3 cell lysate Western blot analysis of cell lysates using 1 µg/mL Rabbit Anti-Calcineurin A Polyclonal Antibody (ABIN398733) The signal was developed with IRDye™ 800 Conjugated Goat Anti-Rabbit IgG.