



[Go to Product page](#)

Datasheet for ABIN1574122
anti-CDK5 antibody (C-Term)

2 Images

Overview

Quantity:	40 µg
Target:	CDK5
Binding Specificity:	C-Term
Reactivity:	Human, Mouse, Rat
Host:	Rabbit
Clonality:	Polyclonal
Application:	Western Blotting (WB)

Product Details

Immunogen:	KLH-coupled synthetic peptide from C-terminal of human CDK5 .
Isotype:	IgG2b
Specificity:	Rabbit Anti-CDK5 Polyclonal Antibody detects endogenous levels of human, mouse, and rat CDK5. Positive Control: Hela, HEK293, mouse brain and rat brain.
Cross-Reactivity (Details):	Rabbit Anti-CDK5 Polyclonal Antibody detects endogenous levels of human, mouse, and rat CDK5. Positive Control: Hela, HEK293, mouse brain and rat brain.
Purification:	Immunoaffinity chromatography

Target Details

Target:	CDK5
Alternative Name:	CDK5 (CDK5 Products)

Target Details

Background: Cyclin dependent kinase 5 (CDK5), a member of the cyclin-dependent kinase family, plays crucial roles in neuronal differentiation, migration, axon outgrowth and synaptogenesis. CDK5 is a proline-directed serine/threonine (Ser/Thr) kinase that phosphorylates a diverse range of substrates, such as histone H1, TAU, MAP2 and NF-H and NF-M. The activity of CDK5 depends on the combination of neuron specific activator proteins, p35 or p39 or their truncated forms, p25 and p29. CDK5 phosphorylates the transcription factor myocyte enhancer factor 2 in mediation of neurotoxic effects. The conversion of p35 to p25 by calpain gives rise to prolonged activation of CDK5. Deregulated CDK5 activity has been implicated in neurodegenerative diseases, including Alzheimer-disease, Parkinsons disease and amyotrophic lateral sclerosis. Rabbit Anti-CDK5 Polyclonal Antibody is developed in rabbit using a KLH-coupled synthetic peptide from C-terminal of human CDK5 (Swiss Prot: Q00535).

Pathways: [Cell Division Cycle](#), [Regulation of Muscle Cell Differentiation](#), [Synaptic Membrane](#), [Regulation of Cell Size](#), [Skeletal Muscle Fiber Development](#), [Synaptic Vesicle Exocytosis](#)

Application Details

Application Notes: Working concentrations for specific applications should be determined by the investigator. The appropriate concentrations may be affected by secondary antibody affinity, antigen concentration, the sensitivity of the method of detection, temperature, the length of the incubations, and other factors. The suitability of this antibody for applications other than those listed below has not been determined. The following concentration ranges are recommended starting points for this product.

Western blot: 0.5-1 µg/mL Other Applications: user-optimized

Restrictions: For Research Use only

Handling

Format: Lyophilized

Buffer: PBS, pH 7.4, containing 0.02 % sodium azide.

Preservative: Sodium azide

Precaution of Use: WARNING: Reagents contain sodium azide. Sodium azide is very toxic if ingested or inhaled. Avoid contact with skin, eyes, or clothing. Wear eye or face protection when handling. If skin or eye contact occurs, wash with copious amounts of water. If ingested or inhaled, contact a physician immediately. Sodium azide yields toxic hydrazoic acid under acidic conditions. Dilute azide-containing compounds in running water before discarding to avoid accumulation of

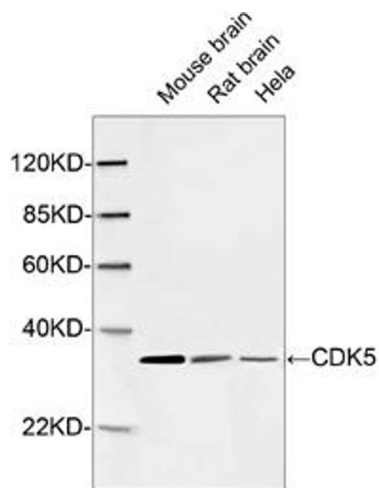
Handling

potentially explosive deposits in lead or copper plumbing.

Storage: 4 °C/-20 °C

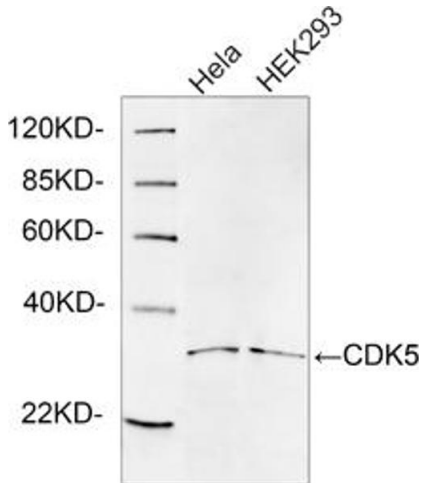
Storage Comment: The antibody is stable in lyophilized form if stored at -20°C or below. The reconstituted antibody can be stored for 2-3 weeks at 2-8°C. For long term storage, aliquot and store at -20°C or below. Avoid repeated freezing and thawing cycles.

Images



Western Blotting

Image 1. Western blot analysis of cell and tissue lysates using 1 µg/mL Rabbit Anti-CDK5 Polyclonal Antibody (ABIN398921) The signal was developed with IRDye™ 800 Conjugated Goat Anti-Rabbit IgG. Predicted Size: 33 KD Observed Size: 33 KD



Western Blotting

Image 2. Western blot analysis of cell lysates using 1 µg/mL Rabbit Anti-CDK5 Polyclonal Antibody (ABIN398921) The signal was developed with IRDye™ 800 Conjugated Goat Anti-Rabbit IgG. Predicted Size: 33 KD Observed Size: 33 KD