

Datasheet for ABIN1574138
anti-ENPP1 antibody (C-Term)[Go to Product page](#)

1 Image

Overview

Quantity:	40 µg
Target:	ENPP1
Binding Specificity:	C-Term
Reactivity:	Human
Host:	Goat
Clonality:	Polyclonal
Conjugate:	This ENPP1 antibody is un-conjugated
Application:	Western Blotting (WB)

Product Details

Immunogen:	KLH-coupled synthetic peptide from C-terminal of human ENPP1 .
Isotype:	IgG
Specificity:	ENPP1 Antibody detects human ENPP1.
Purification:	Immunoaffinity chromatography

Target Details

Target:	ENPP1
Alternative Name:	ENPP1 (ENPP1 Products)
Background:	Ectonucleotide pyrophosphatase 1 (ENPP1) is belongs to a family of nucleotide pyrophosphate phosphodiesterases. It contains a short amino-terminal cytoplasmic tail, a single

Target Details

transmembrane domain, and a large extracellular carboxyl-terminal domain. This cell surface enzyme generates inorganic pyrophosphate which regulates cell differentiation. It serves as a physiological inhibitor of pyrophosphate calcification at least in part by generating ePPi from the dephosphorylation of ATP. Inactivating mutations of ENPP1 are associated with generalized arterial calcification of infancy.

ENPP1 Antibody is developed in goat using a KLH-coupled synthetic peptide from C-terminal of human ENPP1 (Swiss Prot: P22413).

Pathways: [Regulation of Carbohydrate Metabolic Process](#)

Application Details

Application Notes: Working concentrations for specific applications should be determined by the investigator. The appropriate concentrations may be affected by secondary antibody affinity, antigen concentration, the sensitivity of the method of detection, temperature, the length of the incubations, and other factors. The suitability of this antibody for applications other than those listed below has not been determined. The following concentration ranges are recommended starting points for this product.

Western blot: 0.5-1 µg/mL. Other Applications: user optimized.

Restrictions: For Research Use only

Handling

Format: Lyophilized

Buffer: PBS, pH 7.4, containing 0.02 % sodium azide

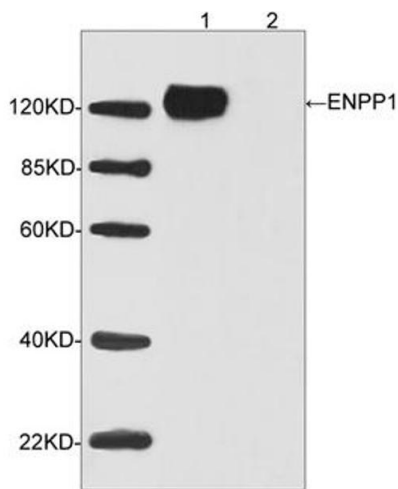
Preservative: Sodium azide

Precaution of Use: WARNING: Reagents contain sodium azide. Sodium azide is very toxic if ingested or inhaled. Avoid contact with skin, eyes, or clothing. Wear eye or face protection when handling. If skin or eye contact occurs, wash with copious amounts of water. If ingested or inhaled, contact a physician immediately. Sodium azide yields toxic hydrazoic acid under acidic conditions. Dilute azide-containing compounds in running water before discarding to avoid accumulation of potentially explosive deposits in lead or copper plumbing.

Storage: 4 °C/-20 °C

Storage Comment: The antibody is stable in lyophilized form if stored at -20°C or below. The reconstituted antibody can be stored for 2-3 weeks at 2-8°C. For long term storage, aliquot and store at -20°C or below.

Avoid repeated freezing and thawing cycles.



Western Blotting

Image 1. Western blot analysis of transfected HEK293 cell lysates using ENPP1 Antibody (ABIN398962, 1 µg/mL) Loading: Lane 1: Human ENPP1 expression in transfected HEK293 cell lysateLane 2: Non-transfected HEK293 cell lysateSecondary antibody: Donkey Anti-Goat IgG (H&L) [HRP] (ABIN398411, 1: 5,000) Predicted Size: 125 KD Observed Size: 125 KD