

Datasheet for ABIN1574207
anti-DAZL antibody (N-Term)[Go to Product page](#)

1 Image

Overview

Quantity:	40 µg
Target:	DAZL
Binding Specificity:	N-Term
Reactivity:	Human, Mouse, Rat
Host:	Rabbit
Clonality:	Polyclonal
Conjugate:	This DAZL antibody is un-conjugated
Application:	Western Blotting (WB)

Product Details

Immunogen:	KLH-coupled synthetic peptide from N-terminal of human DAZL
Isotype:	IgG
Specificity:	DAZL Antibody, pAb, Rabbit detects endogenous levels of mouse and rat DAZL. Predicted to react with human DAZL according to sequence homology. Positive Control: Mouse brain and rat brain
Cross-Reactivity (Details):	DAZL Antibody, pAb, Rabbit detects endogenous levels of mouse and rat DAZL. Predicted to react with human DAZL according to sequence homology. Positive Control: Mouse brain and rat brain
Purification:	Immunoaffinity chromatography

Target Details

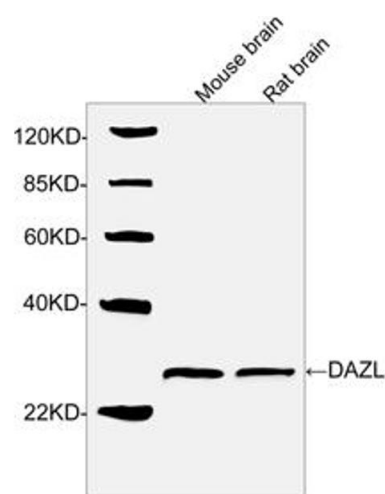
Target:	DAZL
Alternative Name:	DAZL (DAZL Products)
Background:	DAZL is one member of the DAZ family of RNA binding proteins. It plays a role in germ cell development. DAZL is located in the cytoplasm of adult germ cells. Mutations in DAZL have been implicated in severe spermatogenic failure and infertility in males. Expression of DAZL is found in fetal and adult testes and ovaries. DAZL Antibody, pAb, Rabbit is developed in rabbit using a KLH-coupled synthetic peptide from N-terminal of human DAZL (Swiss Prot: Q92904).

Application Details

Application Notes:	<p>Working concentrations for specific applications should be determined by the investigator. The appropriate concentrations may be affected by secondary antibody affinity, antigen concentration, the sensitivity of the method of detection, temperature, the length of the incubations, and other factors. The suitability of this antibody for applications other than those listed below has not been determined. The following concentration ranges are recommended starting points for this product.</p> <p>Western blot: 0.5-1 µg/mL Other Applications: User optimized</p>
Restrictions:	For Research Use only

Handling

Format:	Lyophilized
Buffer:	PBS, pH 7.4, containing 0.02 % sodium azide
Preservative:	Sodium azide
Precaution of Use:	<p>WARNING: Reagents contain sodium azide. Sodium azide is very toxic if ingested or inhaled. Avoid contact with skin, eyes, or clothing. Wear eye or face protection when handling. If skin or eye contact occurs, wash with copious amounts of water. If ingested or inhaled, contact a physician immediately. Sodium azide yields toxic hydrazoic acid under acidic conditions. Dilute azide-containing compounds in running water before discarding to avoid accumulation of potentially explosive deposits in lead or copper plumbing.</p>
Storage:	4 °C/-20 °C
Storage Comment:	<p>The antibody is stable in lyophilized form if stored at -20°C or below. The reconstituted antibody can be stored for 2-3 weeks at 2-8°C. For long term storage, aliquot and store at -20°C or below. Avoid repeated freezing and thawing cycles.</p>



Western Blotting

Image 1. Western blot analysis of tissue lysates using DAZL Antibody, pAb, Rabbit (ABIN399110, 1 µg/mL) The signal was developed with IRDye-800 Conjugated Goat Anti-Rabbit IgG. Predicted Size: 33 KD Observed Size: 33 KD