

Datasheet for ABIN1574428

**anti-Acrosin antibody (Cleaved-Ile43, Heavy Chain)**[Go to Product page](#)**1** Image

## Overview

Quantity:	100 µg
Target:	Acrosin (ACR)
Binding Specificity:	Cleaved-Ile43, Heavy Chain
Reactivity:	Human
Host:	Rabbit
Clonality:	Polyclonal
Conjugate:	This Acrosin antibody is un-conjugated
Application:	Western Blotting (WB), ELISA

## Product Details

Immunogen:	The antiserum was produced against synthesized peptide derived from human ACRO.
Specificity:	Epitopes for Species: H:I43
Purification:	The antibody was affinity-purified from rabbit antiserum by affinity-chromatography using epitope-specific immunogen.

## Target Details

Target:	Acrosin (ACR)
Alternative Name:	ACRO ( <a href="#">ACR Products</a> )
Background:	Acrosin, EC=3.4.21.10
UniProt:	<a href="#">P10323</a>

Target Details

Pathways: cAMP Metabolic Process

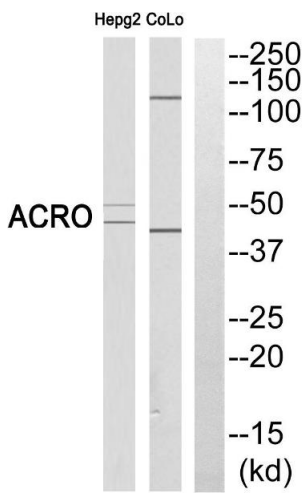
Application Details

Application Notes:	Optimal working dilution should be determined by the investigator.
Restrictions:	For Research Use only

Handling

Concentration:	1 mg/mL
Buffer:	Rabbit IgG in phosphate buffered saline (without Mg2+ and Ca2+), pH 7.4, 150 mM NaCl, 0.02 % sodium azide and 50 % glycerol.
Storage:	-20 °C
Storage Comment:	Store at -20°C / 1 year
Expiry Date:	12 months

Images



Western Blotting

**Image 1.** Western blot analysis of extracts from HEPG2 cells and COLO cells, using ACRO (heavy chain, Cleaved-ll antibody).