

Datasheet for ABIN1577368

anti-ITPA antibody

1 Image



[Go to Product page](#)

Overview

Quantity:	100 µg
Target:	ITPA
Reactivity:	Human
Host:	Rabbit
Conjugate:	This ITPA antibody is un-conjugated
Application:	Western Blotting (WB), ELISA, Immunohistochemistry (IHC)

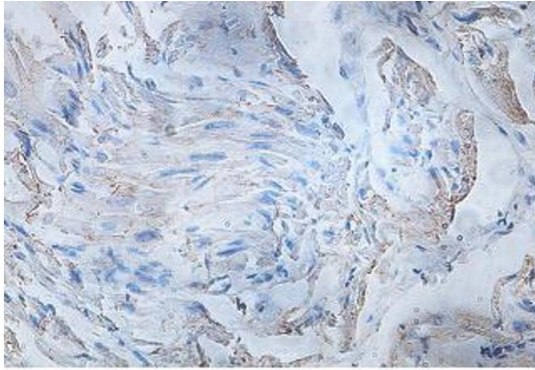
Product Details

Target Details

Target:	ITPA
Alternative Name:	ITPA (ITPA Products)
HGNC:	0

Application Details

Restrictions:	For Research Use only
---------------	-----------------------



Immunohistochemical staining of formalin-fixed paraffin-embedded fetal heart showing cytoplasmic staining with anti-ITPA antibody at a dilution of 1/100.

Image 1.