

Datasheet for ABIN1589990
anti-ACADVL antibody (C-Term)[Go to Product page](#)

1 Image

Overview

Quantity:	100 µg
Target:	ACADVL
Binding Specificity:	C-Term
Reactivity:	Human
Host:	Goat
Clonality:	Polyclonal
Conjugate:	This ACADVL antibody is un-conjugated
Application:	Western Blotting (WB), ELISA

Product Details

Purpose:	VLCAD
Immunogen:	Peptide with sequence C-RSLSEGHPTAQHE, from the C Terminus (near) of the protein sequence according to NP_000009.1, NP_001029031.1.
Sequence:	RSLSEGHPTA QHE
Isotype:	IgG
Specificity:	This antibody is expected to recognize both reported isoforms (NP_000009.1, NP_001029031.1).
Cross-Reactivity:	Cow, Dog, Human
Purification:	Purified from goat serum by ammonium sulphate precipitation followed by antigen affinity chromatography using the immunizing peptide.

Product Details

Grade: Verified

Target Details

Target: ACADVL

Alternative Name: ACADVL ([ACADVL Products](#))

Background: ACADVL, acyl-Coenzyme A dehydrogenase, very long chain, ACAD6, LCACD, VLCAD

Gene ID: 37

NCBI Accession: [NP_000009](#), [NP_001029031](#)

Pathways: [ER-Nucleus Signaling](#), [Monocarboxylic Acid Catabolic Process](#)

Application Details

Application Notes: Western Blot: Approx 70 kDa band observed in Human Heart lysates (calculated MW of 70.4 kDa according to NP_000009.1). Recommended concentration: 1-3 µg/mL.
Peptide ELISA: antibody detection limit dilution 1:16000.

Restrictions: For Research Use only

Handling

Format: Liquid

Concentration: 0.5 mg/mL

Buffer: Supplied at 0.5 mg/mL in Tris saline, 0.02 % sodium azide, pH 7.3 with 0.5 % bovine serum albumin.

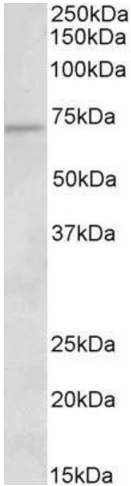
Preservative: Sodium azide

Precaution of Use: This product contains Sodium azide: a POISONOUS AND HAZARDOUS SUBSTANCE which should be handled by trained staff only.

Handling Advice: Minimize freezing and thawing.

Storage: -20 °C

Storage Comment: Aliquot and store at -20°C, with minimal freeze/thawing. A working aliquot may be refrigerated at 4°C for a few weeks and still remain viable.



Western Blotting

Image 1. ABIN1589990 (1µg/ml) staining of Human Heart lysate (35µg protein in RIPA buffer). Primary incubation was 1 hour. Detected by chemiluminescence.