

Datasheet for ABIN1589993

**anti-EEF1E1 antibody (Internal Region)****3** Images[Go to Product page](#)

## Overview

Quantity:	100 µg
Target:	EEF1E1
Binding Specificity:	Internal Region
Reactivity:	Human, Pig
Host:	Goat
Clonality:	Polyclonal
Conjugate:	This EEF1E1 antibody is un-conjugated
Application:	Western Blotting (WB), ELISA, Immunohistochemistry (IHC)

## Product Details

Purpose:	EEF1E1 / AIMP3 / p18
Sequence:	SKGNKYSAQG ERQ
Isotype:	IgG
Specificity:	This antibody is expected to recognize both reported isoforms (NP_004271.1, NP_001129122.1).
Cross-Reactivity:	Cow, Dog, Human, Pig
Purification:	Purified from goat serum by ammonium sulphate precipitation followed by antigen affinity chromatography using the immunizing peptide.
Grade:	Verified

## Target Details

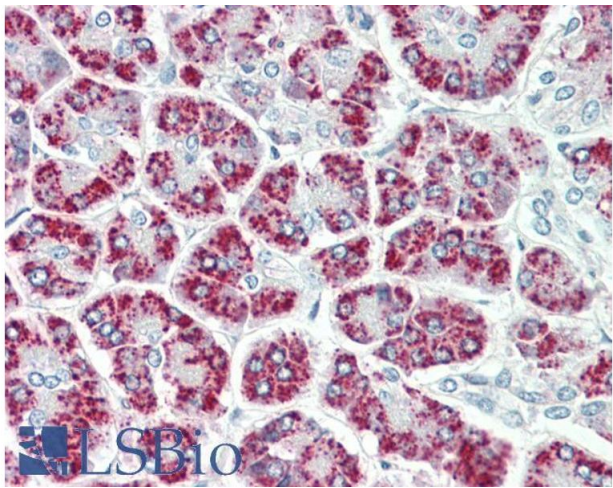
Target:	EEF1E1
Alternative Name:	EEF1E1 ( <a href="#">EEF1E1 Products</a> )
Background:	EEF1E1, eukaryotic translation elongation factor 1 epsilon 1, AIMP3, P18, ARS-interacting multifunctional protein 3, aminoacyl tRNA synthetase complex-interacting multifunctional protein 3, eukaryotic translation elongation factor 1 epsilon-1
Gene ID:	9521
NCBI Accession:	<a href="#">NP_004271</a> , <a href="#">NP_001129122</a>
Pathways:	<a href="#">Positive Regulation of Response to DNA Damage Stimulus</a>

## Application Details

Application Notes:	Immunohistochemistry: Paraffin embedded Human Pancreas. Recommended concentration: 5 µg/mL.  Western Blot: Approx 19 kDa band observed in lysates of cell lines HepG2 and K562 (calculated MW of 19.8 kDa according to NP_004271.1) and in Pig Testis lysates (calculated MW of 19.8 kDa according to NP_001230474.1). Recommended concentration: 0.1-0.3 µg/mL  Peptide ELISA: antibody detection limit dilution 1:128000.
Restrictions:	For Research Use only

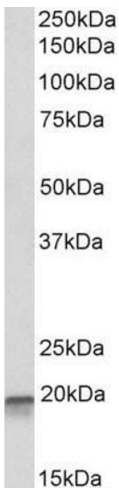
## Handling

Format:	Liquid
Concentration:	0.5 mg/mL
Buffer:	Supplied at 0.5 mg/mL in Tris saline, 0.02 % sodium azide, pH 7.3 with 0.5 % bovine serum albumin.
Preservative:	Sodium azide
Precaution of Use:	This product contains Sodium azide: a POISONOUS AND HAZARDOUS SUBSTANCE which should be handled by trained staff only.
Handling Advice:	Minimize freezing and thawing.
Storage:	-20 °C
Storage Comment:	Aliquot and store at -20°C, with minimal freeze/thawing. A working aliquot may be refrigerated at 4°C for a few weeks and still remain viable.



#### Immunohistochemistry

**Image 1.** ABIN1589993 (5µg/ml) staining of paraffin embedded Human Pancreas. Steamed antigen retrieval with citrate buffer pH 6, AP-staining.



#### Western Blotting

**Image 2.** ABIN1589993 (0.1µg/ml) staining of K562 lysate (35µg protein in RIPA buffer). Detected by chemiluminescence.



#### Western Blotting

**Image 3.** ABIN1589993 (0.3µg/ml) staining of Pig Testis lysate (35µg protein in RIPA buffer). Detected by chemiluminescence.