

Datasheet for ABIN1589994  
**anti-DMP1 antibody (N-Term)**

## 1 Image

[Go to Product page](#)

## Overview

Quantity:	100 µg
Target:	DMP1 (DMTF1)
Binding Specificity:	N-Term
Reactivity:	Human, Mouse, Rat
Host:	Goat
Clonality:	Polyclonal
Conjugate:	This DMP1 antibody is un-conjugated
Application:	Western Blotting (WB), ELISA

## Product Details

Purpose:	DMTF1 (isoform a)
Sequence:	CPQNEADEID SEDS
Isotype:	IgG
Specificity:	This antibody is expected to recognize both reported isoform a (NP_066968.3) only. Reported variants represent identical protein: NP_066968.3, NP_001135799.1
Cross-Reactivity:	Cow, Dog, Human, Pig
Purification:	Purified from goat serum by ammonium sulphate precipitation followed by antigen affinity chromatography using the immunizing peptide.
Grade:	Verified

## Target Details

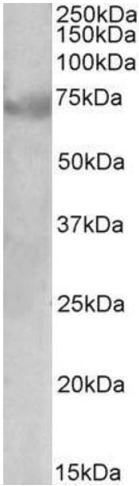
Target:	DMP1 (DMTF1)
Alternative Name:	DMTF1 ( <a href="#">DMTF1 Products</a> )
Background:	DMTF1, cyclin D binding myb-like transcription factor 1, DMP1, DMTF, hDMP1, cyclin D-binding Myb-like protein, cyclin-D-binding Myb-like transcription factor 1, cyclin-D-interacting Myb-like protein 1, hDMTF1
Gene ID:	9988, 23857
NCBI Accession:	<a href="#">NP_066968</a> , <a href="#">NP_001135798</a>

## Application Details

Application Notes:	Western Blot: Approx 70 kDa band observed in Human Lung and Testis lysates (calculated MW of 74.9 kDa according to NP_001135798.1). Recommended concentration: 1-3 µg/mL. Peptide ELISA: antibody detection limit dilution 1:16000.
Restrictions:	For Research Use only

## Handling

Format:	Liquid
Concentration:	0.5 mg/mL
Buffer:	Supplied at 0.5 mg/mL in Tris saline, 0.02 % sodium azide, pH 7.3 with 0.5 % bovine serum albumin.
Preservative:	Sodium azide
Precaution of Use:	This product contains Sodium azide: a POISONOUS AND HAZARDOUS SUBSTANCE which should be handled by trained staff only.
Handling Advice:	Minimize freezing and thawing.
Storage:	-20 °C
Storage Comment:	Aliquot and store at -20°C, with minimal freeze/thawing. A working aliquot may be refrigerated at 4°C for a few weeks and still remain viable.



Western Blotting

**Image 1.** ABIN1589994 (1µg/ml) staining of Human Lung lysate (35µg protein in RIPA buffer). Primary incubation was 1 hour. Detected by chemiluminescence.