



Datasheet for ABIN1589995  
**anti-E2F3 antibody (C-Term)**



[Go to Product page](#)

1 Image

Overview

Quantity:	100 µg
Target:	E2F3
Binding Specificity:	C-Term
Reactivity:	Mouse
Host:	Goat
Clonality:	Polyclonal
Conjugate:	This E2F3 antibody is un-conjugated
Application:	Western Blotting (WB), ELISA

Product Details

Purpose:	E2F3 (mouse)
Sequence:	DLEKLPLVED FMCS
Isotype:	IgG
Cross-Reactivity:	Human, Mouse
Purification:	Purified from goat serum by ammonium sulphate precipitation followed by antigen affinity chromatography using the immunizing peptide.
Grade:	Verified

Target Details

Target:	E2F3
---------	------

## Target Details

---

Abstract:	<a href="#">E2F3 Products</a>
Background:	E2f3, E2F transcription factor 3, E2F3b, E2f3a, mKIAA0075, OTTMUSP00000000663
Gene ID:	1871, 13557
NCBI Accession:	<a href="#">NP_034223</a>

## Application Details

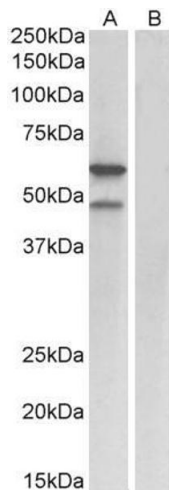
---

Application Notes:	Western Blot: Approx 60 kDa and 48 kDa band observed in Mouse fetal Lung lysates (calculated MW of 48.8 kDa according to NP_034223.1). The 60 kDa band was also observed in nuclear lysates of cell line NIH3T3 and it corresponds with different antibodies from Peptide ELISA: antibody detection limit dilution 1:8000.
Restrictions:	For Research Use only

## Handling

---

Format:	Liquid
Concentration:	0.5 mg/mL
Buffer:	Supplied at 0.5 mg/mL in Tris saline, 0.02 % sodium azide, pH 7.3 with 0.5 % bovine serum albumin.
Preservative:	Sodium azide
Precaution of Use:	This product contains Sodium azide: a POISONOUS AND HAZARDOUS SUBSTANCE which should be handled by trained staff only.
Handling Advice:	Minimize freezing and thawing.
Storage:	-20 °C
Storage Comment:	Aliquot and store at -20°C, with minimal freeze/thawing. A working aliquot may be refrigerated at 4°C for a few weeks and still remain viable.



### Western Blotting

**Image 1.** ABIN1589995 (1 $\mu$ g/ml) staining of Mouse fetal Lung lysate (35 $\mu$ g protein in RIPA buffer) with (B) and without (A) blocking with the immunizing peptide. Primary incubation was 1 hour. Detected by chemiluminescence.