

Datasheet for ABIN1590000
anti-CRX antibody (Internal Region)[Go to Product page](#)

2 Images

Overview

Quantity:	100 µg
Target:	CRX
Binding Specificity:	Internal Region
Reactivity:	Human, Rat
Host:	Goat
Clonality:	Polyclonal
Conjugate:	This CRX antibody is un-conjugated
Application:	Western Blotting (WB), ELISA, Immunohistochemistry (IHC)

Product Details

Purpose:	Cone-rod homeobox (C Terminus)
Sequence:	DPLDYKDQSA WK
Isotype:	IgG
Cross-Reactivity:	Cow, Human, Mouse, Pig, Rat
Purification:	Purified from goat serum by ammonium sulphate precipitation followed by antigen affinity chromatography using the immunizing peptide.
Grade:	Verified

Target Details

Target:	CRX
---------	-----

Target Details

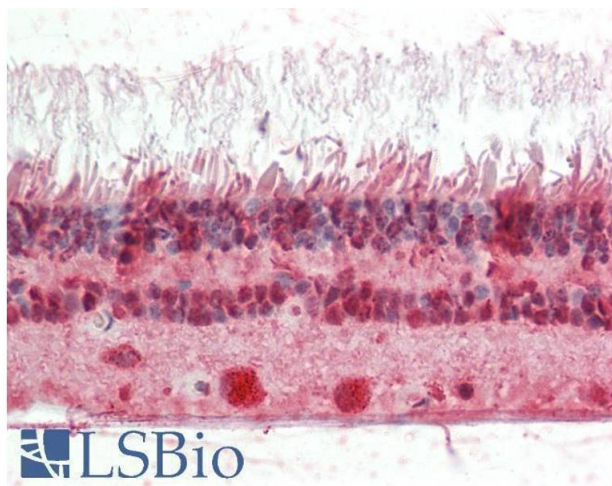
Alternative Name:	CRX (CRX Products)
Background:	CRX, cone-rod homeobox, CORD2, CRD, LCA7, OTX3, cone-rod homeobox protein, orthodenticle homeobox 3
Gene ID:	1406, 12951, 60446
NCBI Accession:	NP_000545

Application Details

Application Notes:	<p>Immunohistochemistry: Paraffin embedded Human Retina. Recommended concentration: 5 µg/mL.</p> <p>Western Blot: Approx 30 kDa band observed in Rat Retina lysates (calculated MW of 32.3 kDa according to Human NP_000545.1 and to Rat NP_068627.1). Recommended concentration: 1-3 µg/mL. Primary incubation was 1 hour.</p> <p>Peptide ELISA: antibody detection limit dilution 1:128000.</p>
Restrictions:	For Research Use only

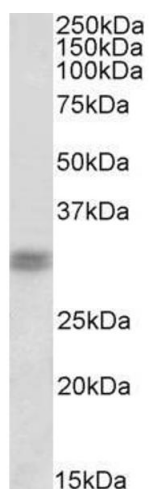
Handling

Format:	Liquid
Concentration:	0.5 mg/mL
Buffer:	Supplied at 0.5 mg/mL in Tris saline, 0.02 % sodium azide, pH 7.3 with 0.5 % bovine serum albumin.
Preservative:	Sodium azide
Precaution of Use:	This product contains Sodium azide: a POISONOUS AND HAZARDOUS SUBSTANCE which should be handled by trained staff only.
Handling Advice:	Minimize freezing and thawing.
Storage:	-20 °C
Storage Comment:	Aliquot and store at -20°C, with minimal freeze/thawing. A working aliquot may be refrigerated at 4°C for a few weeks and still remain viable.



Immunohistochemistry

Image 1. ABIN1590000 (5µg/ml) staining of paraffin embedded Human Retina. Steamed antigen retrieval with citrate buffer pH 6, AP-staining.



Western Blotting

Image 2. ABIN1590000 (1µg/ml) staining of Rat Retina lysate (35µg protein in RIPA buffer). Detected by chemiluminescence.