



[Go to Product page](#)

Datasheet for ABIN1590003
anti-HOXA5 antibody (AA 83-92)

3 Images

Overview

Quantity:	100 µg
Target:	HOXA5
Binding Specificity:	AA 83-92
Reactivity:	Human, Rat, Mouse, Pig
Host:	Goat
Clonality:	Polyclonal
Conjugate:	This HOXA5 antibody is un-conjugated
Application:	Western Blotting (WB), ELISA

Product Details

Purpose:	HOXA5 (aa83-92)
Sequence:	EPRYSQPATS
Isotype:	IgG
Cross-Reactivity:	Cow, Human, Mouse, Pig
Purification:	Purified from goat serum by ammonium sulphate precipitation followed by antigen affinity chromatography using the immunizing peptide.
Grade:	Verified

Target Details

Target:	HOXA5
---------	-------

Target Details

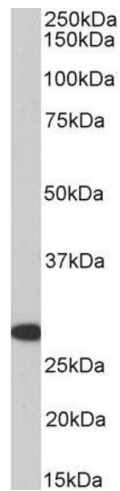
Alternative Name:	HOXA5 (HOXA5 Products)
Background:	HOXA5, homeobox A5, HOX1, HOX1.3, HOX1C, homeo box 1C, homeo box A5, homeobox protein HOXA5, homeobox protein Hox-1C, homeobox protein Hox-A5
Gene ID:	3202, 15402
NCBI Accession:	NP_061975

Application Details

Application Notes:	Western Blot: Approx 28 kDa band observed in Human, Mouse, Rat and Pig Kidney lysates (calculated MW of 29.2 kDa according to Mouse NP_034583.1). Recommended concentration: 1-3 µg/mL. Peptide ELISA: antibody detection limit dilution 1:8000.
Restrictions:	For Research Use only

Handling

Format:	Liquid
Concentration:	0.5 mg/mL
Buffer:	Supplied at 0.5 mg/mL in Tris saline, 0.02 % sodium azide, pH 7.3 with 0.5 % bovine serum albumin.
Preservative:	Sodium azide
Precaution of Use:	This product contains Sodium azide: a POISONOUS AND HAZARDOUS SUBSTANCE which should be handled by trained staff only.
Handling Advice:	Minimize freezing and thawing.
Storage:	-20 °C
Storage Comment:	Aliquot and store at -20°C, with minimal freeze/thawing. A working aliquot may be refrigerated at 4°C for a few weeks and still remain viable.



Western Blotting

Image 1. ABIN1590003 (1µg/ml) staining of Pig Kidney lysate (35µg protein in RIPA buffer). Primary incubation was 1 hour. Detected by chemiluminescence.

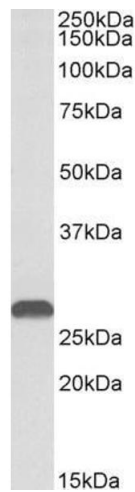
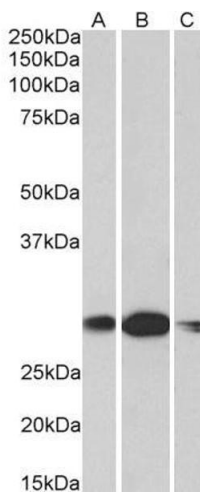


Image 2. ABIN1590003 (1 µg/mL) staining of Mouse Kidney lysate (35 µg protein in RIPA buffer). Primary incubation was 1 hour. Detected by chemiluminescence.



Western Blotting

Image 3. ABIN1590003 (1µg/ml) staining of Human (A), Mouse (B) and rat (C) Kidney lysates (35µg protein in RIPA buffer). Primary incubation was 1 hour. Detected by chemiluminescence.