

Datasheet for ABIN1590005
anti-Myosin IH antibody (C-Term)[Go to Product page](#)

2 Images

Overview

Quantity:	100 µg
Target:	Myosin IH (MYO1H)
Binding Specificity:	C-Term
Reactivity:	Human, Mouse
Host:	Goat
Clonality:	Polyclonal
Conjugate:	This Myosin IH antibody is un-conjugated
Application:	Western Blotting (WB), ELISA, Immunohistochemistry (IHC)

Product Details

Purpose:	Myosin IH
Sequence:	EDQVYKDKNG QLR
Isotype:	IgG
Cross-Reactivity:	Cow, Human, Mouse, Pig, Rat
Purification:	Purified from goat serum by ammonium sulphate precipitation followed by antigen affinity chromatography using the immunizing peptide.
Grade:	Verified

Target Details

Target:	Myosin IH (MYO1H)
---------	-------------------

Target Details

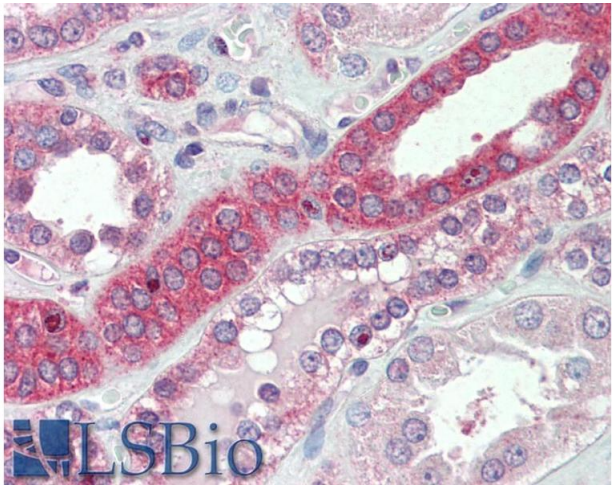
Alternative Name:	Myo1H (MYO1H Products)
Background:	MYO1H, myosin IH, myosin-1H, myosin-Ih, unconventional myosin-Ih
Gene ID:	283446, 231646, 687866
NCBI Accession:	NP_001158045

Application Details

Application Notes:	<p>Immunohistochemistry: Paraffin embedded Human Kidney. Recommended concentration: 5 µg/mL.</p> <p>Western Blot: Approx 110 kDa band observed in lysates of cell line NIH3T3 (calculated MW of 118 kDa according to NP_001158045.1). Recommended concentration: 0.1-0.3 µg/mL. An additional band of unknown identity was also consistently observed at 28 kDa. This</p> <p>Peptide ELISA: antibody detection limit dilution 1:128000.</p>
Restrictions:	For Research Use only

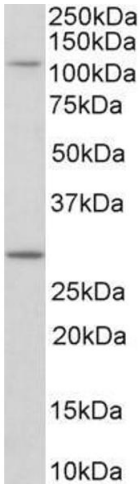
Handling

Format:	Liquid
Concentration:	0.5 mg/mL
Buffer:	Supplied at 0.5 mg/mL in Tris saline, 0.02 % sodium azide, pH 7.3 with 0.5 % bovine serum albumin.
Preservative:	Sodium azide
Precaution of Use:	This product contains Sodium azide: a POISONOUS AND HAZARDOUS SUBSTANCE which should be handled by trained staff only.
Handling Advice:	Minimize freezing and thawing.
Storage:	-20 °C
Storage Comment:	Aliquot and store at -20°C, with minimal freeze/thawing. A working aliquot may be refrigerated at 4°C for a few weeks and still remain viable.



Immunohistochemistry

Image 1. ABIN1590005 (5µg/ml) staining of paraffin embedded Human Kidney. Steamed antigen retrieval with citrate buffer pH 6, AP-staining.



Western Blotting

Image 2. ABIN1590005 (0.1µg/ml) staining of NIH3T3 lysate (35µg protein in RIPA buffer). Detected by chemiluminescence.