

Datasheet for ABIN1590006

anti-MAPKAP Kinase 2 antibody (Internal Region)

4 Images

[Go to Product page](#)

Overview

Quantity:	100 µg
Target:	MAPKAP Kinase 2 (MAPKAPK2)
Binding Specificity:	Internal Region
Reactivity:	Human, Mouse
Host:	Goat
Clonality:	Polyclonal
Conjugate:	This MAPKAP Kinase 2 antibody is un-conjugated
Application:	Western Blotting (WB), Immunohistochemistry (IHC), ELISA, Immunoprecipitation (IP)

Product Details

Purpose:	MK2 / MAPKAPK2
Sequence:	SRVLKEDKER WED
Isotype:	IgG
Specificity:	This antibody is expected to recognize both reported isoforms (NP_004750.1, NP_116584.2).
Cross-Reactivity:	Cow, Dog, Human, Mouse, Rat
Purification:	Purified from goat serum by ammonium sulphate precipitation followed by antigen affinity chromatography using the immunizing peptide.
Grade:	Verified

Target Details

Target:	MAPKAP Kinase 2 (MAPKAPK2)
Alternative Name:	MAPKAPK2 (MAPKAPK2 Products)
Background:	MAPKAPK2, mitogen-activated protein kinase-activated protein kinase 2, MAPKAP-K2, MK-2, MK2, MAP kinase-activated protein kinase 2, MAPK-activated protein kinase 2, MAPKAP kinase 2
Gene ID:	9261, 17164, 289014
NCBI Accession:	NP_004750 , NP_116584
Pathways:	MAPK Signaling , Neurotrophin Signaling Pathway , Activation of Innate immune Response , Toll-Like Receptors Cascades

Application Details

Application Notes:	Immunohistochemistry: Paraffin embedded Human Heart. Recommended concentration: 5 µg/mL. Western Blot: Approx 60 kDa band observed in Mouse Embryonic Fibroblasts (MEF) lysates, not present in the knockout MEFs and reappearing as a 45 kDa band upon reintroduction of MK2 gene expression through viral transduction (calculated MW of 44.0 kDa accord Peptide ELISA: antibody detection limit dilution 1:128000.
Comment:	Immunoprecipitation: MK2/MK3 double knockout MEFs retrovirally transduced with MK2 or empty vector were lysed from confluent plates and used for IP with 1.5ug EB11929 or EB11930. Western blots of the IP were labelled with rabbit anti-MK2
Restrictions:	For Research Use only

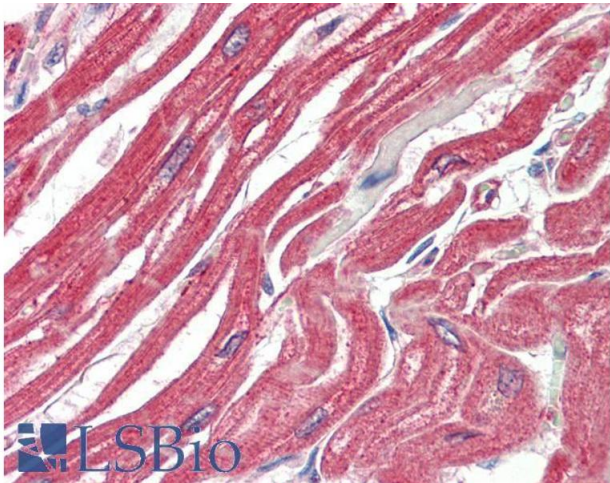
Handling

Format:	Liquid
Concentration:	0.5 mg/mL
Buffer:	Supplied at 0.5 mg/mL in Tris saline, 0.02 % sodium azide, pH 7.3 with 0.5 % bovine serum albumin.
Preservative:	Sodium azide
Precaution of Use:	This product contains Sodium azide: a POISONOUS AND HAZARDOUS SUBSTANCE which should be handled by trained staff only.
Handling Advice:	Minimize freezing and thawing.

Handling

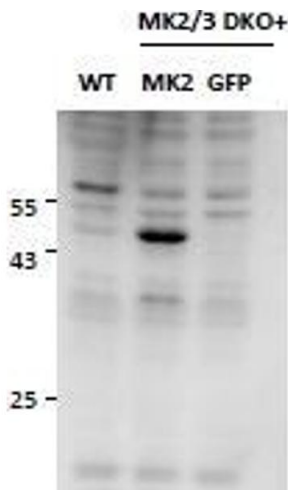
Storage:	-20 °C
Storage Comment:	Aliquot and store at -20°C, with minimal freeze/thawing. A working aliquot may be refrigerated at 4°C for a few weeks and still remain viable.

Images



Immunohistochemistry

Image 1. ABIN1590006 (5µg/ml) staining of paraffin embedded Human Heart. Steamed antigen retrieval with citrate buffer Ph 6, AP-staining.



Western Blotting

Image 2. ABIN1590006 (0.5µg/ml) staining of MEF lysates (35µg protein in RIPA buffer), from double KO mice in second and third lanes and rescued by introduction of MK2 gene in second lane. Primary incubation was 2 hour. Detected by chemiluminescence.

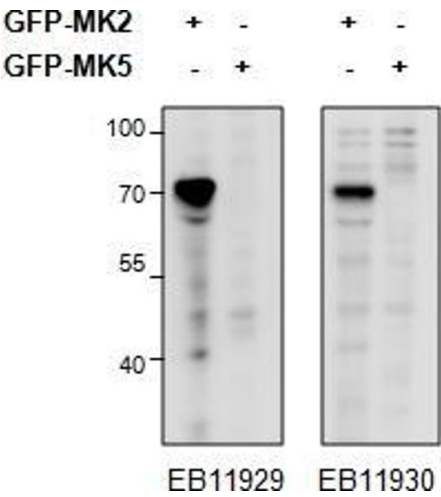


Image 3. HEK293 overexpressing Mouse MK2 fused to GFP or overexpressing MK5 fused to GFP and probed with ABIN1590006 (0.5 µg/mL) in the left panel and with ABIN1590004 (0.5 µg/mL) in the right panel.

Please check the [product details page](#) for more images. Overall 4 images are available for ABIN1590006.