

Datasheet for ABIN1590008
anti-CREB3L2 antibody (Internal Region)[Go to Product page](#)

1 Image

Overview

Quantity:	100 µg
Target:	CREB3L2
Binding Specificity:	Internal Region
Reactivity:	Mouse, Rat
Host:	Goat
Clonality:	Polyclonal
Conjugate:	This CREB3L2 antibody is un-conjugated
Application:	Western Blotting (WB), ELISA

Product Details

Purpose:	CREB3L2 / BBF2H7
Sequence:	HSLQEPYTAS VVRS
Isotype:	IgG
Cross-Reactivity:	Cow, Dog, Human, Mouse, Rat
Purification:	Purified from goat serum by ammonium sulphate precipitation followed by antigen affinity chromatography using the immunizing peptide.
Grade:	Verified

Target Details

Target:	CREB3L2
---------	---------

Target Details

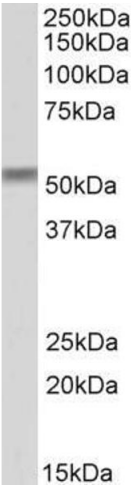
Alternative Name:	CREB3L2 (CREB3L2 Products)
Background:	CREB3L2, cAMP responsive element binding protein 3-like 2, BBF2H7, MGC131709, MGC71006, B-ZIB transcription factor, FUS/BBF2H7 protein, TCAG_1951439, basic transcription factor 2
Gene ID:	64764, 208647, 362339
NCBI Accession:	NP_919047
Pathways:	Thyroid Hormone Synthesis

Application Details

Application Notes:	Western Blot: Approx 55 kDa band observed in Mouse and Rat Testis lysates (calculated MW of 57.4 kDa according to Mouse NP_848776.2 and Rat NP_001012188.1). Recommended concentration: 1-3 µg/mL. Peptide ELISA: antibody detection limit dilution 1:16000.
Restrictions:	For Research Use only

Handling

Format:	Liquid
Concentration:	0.5 mg/mL
Buffer:	Supplied at 0.5 mg/mL in Tris saline, 0.02 % sodium azide, pH 7.3 with 0.5 % bovine serum albumin.
Preservative:	Sodium azide
Precaution of Use:	This product contains Sodium azide: a POISONOUS AND HAZARDOUS SUBSTANCE which should be handled by trained staff only.
Handling Advice:	Minimize freezing and thawing.
Storage:	-20 °C
Storage Comment:	Aliquot and store at -20°C, with minimal freeze/thawing. A working aliquot may be refrigerated at 4°C for a few weeks and still remain viable.



Western Blotting

Image 1. ABIN1590008 (1µg/ml) staining of Rat Testis lysate (35µg protein in RIPA buffer). Primary incubation was 1 hour. Detected by chemiluminescence.