

Datasheet for ABIN1590009
anti-MAPK6 antibody (Internal Region)[Go to Product page](#)

1 Image

Overview

Quantity:	100 µg
Target:	MAPK6
Binding Specificity:	Internal Region
Reactivity:	Human, Mouse
Host:	Goat
Clonality:	Polyclonal
Conjugate:	This MAPK6 antibody is un-conjugated
Application:	Western Blotting (WB), ELISA, Immunohistochemistry (IHC), Immunoprecipitation (IP)

Product Details

Purpose:	ERK3 / MAPK6
Sequence:	HSPVGSPLKS IQ
Isotype:	IgG
Specificity:	Reported variants represent identical protein (NP_056621.4, NP_081694.1).
Cross-Reactivity:	Cow, Dog, Human, Mouse, Pig, Rat
Purification:	Purified from goat serum by ammonium sulphate precipitation followed by antigen affinity chromatography using the immunizing peptide.
Grade:	Verified

Target Details

Target:	MAPK6
Alternative Name:	Mapk6 (MAPK6 Products)
Background:	MAPK6, mitogen-activated protein kinase 6, ERK3, HsT17250, PRKM6, p97MAPK, ERK-3, MAP kinase 6, MAP kinase isoform p97, MAPK 6, extracellular signal-regulated kinase 3, extracellular signal-regulated kinase, p97, p97-MAPK, protein kinase, mitogen-activate
Gene ID:	5597, 50772, 58840
NCBI Accession:	NP_002739
Pathways:	MAPK Signaling , Neurotrophin Signaling Pathway , Regulation of Muscle Cell Differentiation , Hepatitis C

Application Details

Application Notes:	Immunohistochemistry: Paraffin embedded Human Heart. Recommended concentration: 10 µg/mL. Western Blot: In transfected HEK293 transiently expressing Mouse ERK3 / Mapk6 fused to GFP the band with expected size is intensified when co-expressed with MK5 as the stabilizer for ERK3. No bands are observed in transfected HEK293 with empty vector and Peptide ELISA: antibody detection limit dilution 1:128000.
Comment:	Immunoprecipitation: MK5/ERK3 double knockout Mouse Embryonic Fibroblasts (MEFs) retrovirally transduced with MK5/ERK3 or empty vector (GFP) were lysed from confluent plates and used for IP with 1.5ug EB11926. Western blots of the IP were
Restrictions:	For Research Use only

Handling

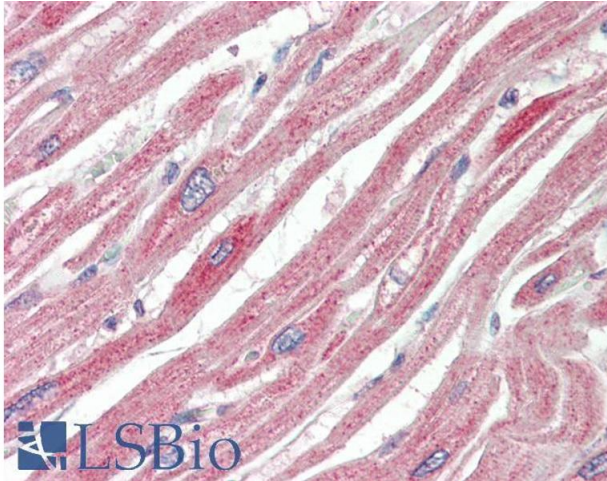
Format:	Liquid
Concentration:	0.5 mg/mL
Buffer:	Supplied at 0.5 mg/mL in Tris saline, 0.02 % sodium azide, pH 7.3 with 0.5 % bovine serum albumin.
Preservative:	Sodium azide
Precaution of Use:	This product contains Sodium azide: a POISONOUS AND HAZARDOUS SUBSTANCE which should be handled by trained staff only.
Handling Advice:	Minimize freezing and thawing.

Handling

Storage: -20 °C

Storage Comment: Aliquot and store at -20°C, with minimal freeze/thawing. A working aliquot may be refrigerated at 4°C for a few weeks and still remain viable.

Images



Immunohistochemistry

Image 1. ABIN5539920 (10µg/ml) staining of paraffin embedded Human Heart. Steamed antigen retrieval with citrate buffer pH 6, AP-staining.