



Datasheet for ABIN1590011

anti-MAPKAP Kinase 5 antibody (Internal Region)



[Go to Product page](#)

2 Images

Overview

Quantity:	100 µg
Target:	MAPKAP Kinase 5 (MAPKAPK5)
Binding Specificity:	Internal Region
Reactivity:	Human, Mouse
Host:	Goat
Clonality:	Polyclonal
Conjugate:	This MAPKAP Kinase 5 antibody is un-conjugated
Application:	Western Blotting (WB), ELISA, Immunohistochemistry (IHC), Immunoprecipitation (IP)

Product Details

Purpose:	MK5 / MAPKAPK5
Sequence:	STEALDNVLP SAQ
Isotype:	IgG
Cross-Reactivity:	Cow, Dog, Human, Mouse, Pig, Rat
Purification:	Purified from goat serum by ammonium sulphate precipitation followed by antigen affinity chromatography using the immunizing peptide.
Grade:	Verified

Target Details

Target:	MAPKAP Kinase 5 (MAPKAPK5)
---------	----------------------------

Target Details

Alternative Name:	Mapkapk5 (MAPKAPK5 Products)
Background:	MAPKAPK5, mitogen-activated protein kinase-activated protein kinase 5, MAPKAP-K5, MK-5, MK5, PRAK, MAP kinase-activated protein kinase 5, MAPK-activated protein kinase 5, MAPKAP kinase 5, MAPKAPK-5, p38-regulated/activated protein kinase
Gene ID:	8550, 17165, 498183
NCBI Accession:	NP_003659 , NP_620777
Pathways:	MAPK Signaling

Application Details

Application Notes:	<p>Immunohistochemistry: In paraffin embedded Human Kidney shows brushborder staining in the PCT. Recommended concentration, 4-8 µg/mL.</p> <p>Western Blot: In transfected HEK293 transiently expressing either Mouse MK5 fused to GFP or the similar Mouse MK2 fused to GFP, only the expected band was observed in the MK5 lane after EB11927 labeling. Data obtained from Dr. M. B. Menon, Inst. Biochemi</p> <p>Peptide ELISA: antibody detection limit dilution 1:32000.</p>
Comment:	Immunoprecipitation: MK5/ERK3 double knockout Mouse Embryonic Fibroblasts (MEFs) retrovirally transduced with Mk5/Erk3 or empty vector (GFP) were lysed from confluent plates and used for IP with 1.5µg EB11927 or EB11928. Western blots of
Restrictions:	For Research Use only

Handling

Format:	Liquid
Concentration:	0.5 mg/mL
Buffer:	Supplied at 0.5 mg/mL in Tris saline, 0.02 % sodium azide, pH 7.3 with 0.5 % bovine serum albumin.
Preservative:	Sodium azide
Precaution of Use:	This product contains Sodium azide: a POISONOUS AND HAZARDOUS SUBSTANCE which should be handled by trained staff only.
Handling Advice:	Minimize freezing and thawing.
Storage:	-20 °C

Handling

Storage Comment: Aliquot and store at -20°C, with minimal freeze/thawing. A working aliquot may be refrigerated at 4°C for a few weeks and still remain viable.

Images

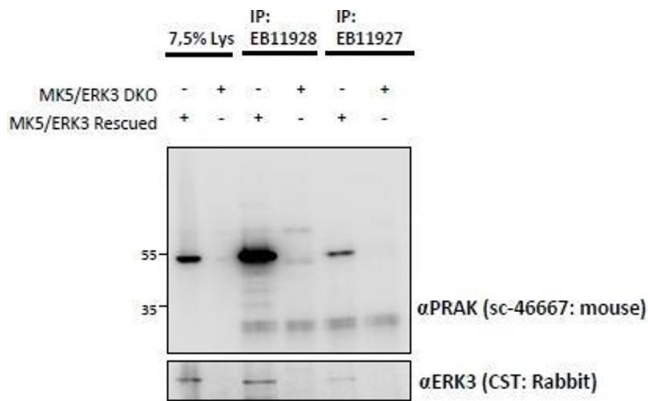


Image 1. ABIN1590011 and EB11928 (1.5ug) immunoprecipitations from lysates of MK5/ERK3 double knockout MEFs, with (third and fifth lanes) and without (fourth and sixth lanes) rescued MK5/ERK3 expression through retroviral transduction. The corresponding lysates (first and second lane resp.) were analyzed in parallel in this Western blot labelled with mouse anti-MK5 / PRAK (and co-precipitation was measured using rabbit anti-ERK3 in the lower panel).

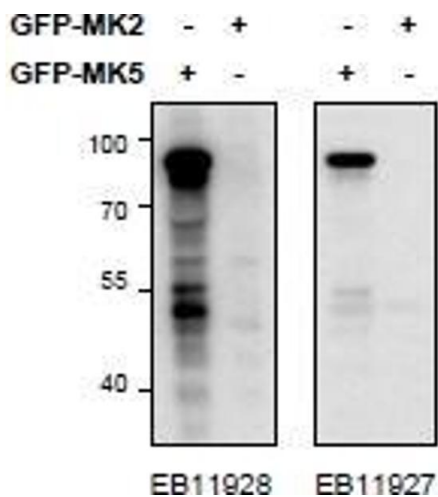


Image 2. HEK293 lysate (10 µg protein in RIPA buffer) overexpressing Mouse MK5-GFP (first lane) or Mouse MK2-GFP (second lane) probed with ABIN1590011 (0.5 µg/mL) in right panel and with ABIN1590013 (0.5 µg/mL) on left panel, Primary incubations were for 2 hours. Detected by chemiluminescence.