

Datasheet for ABIN1590013

anti-MAPKAP Kinase 5 antibody (AA 192-206)



[Go to Product page](#)

1 Image

Overview

Quantity:	100 µg
Target:	MAPKAP Kinase 5 (MAPKAPK5)
Binding Specificity:	AA 192-206
Reactivity:	Human, Mouse
Host:	Goat
Clonality:	Polyclonal
Conjugate:	This MAPKAP Kinase 5 antibody is un-conjugated
Application:	Western Blotting (WB), ELISA, Immunohistochemistry (IHC), Immunoprecipitation (IP)

Product Details

Purpose:	MK5 / MAPKAPK5 (aa192-206)
Sequence:	PQVLEAQRRLH QKEKS
Isotype:	IgG
Cross-Reactivity:	Cow, Dog, Human, Mouse, Pig, Rat
Purification:	Purified from goat serum by ammonium sulphate precipitation followed by antigen affinity chromatography using the immunizing peptide.
Grade:	Verified

Target Details

Target:	MAPKAP Kinase 5 (MAPKAPK5)
---------	----------------------------

Target Details

Alternative Name:	Mapkapk5 (MAPKAPK5 Products)
Background:	MAPKAPK5, mitogen-activated protein kinase-activated protein kinase 5, MAPKAP-K5, MK-5, MK5, PRAK, MAP kinase-activated protein kinase 5, MAPK-activated protein kinase 5, MAPKAP kinase 5, MAPKAPK-5, p38-regulated/activated protein kinase
Gene ID:	8550, 17165, 498183
NCBI Accession:	NP_003659 , NP_620777
Pathways:	MAPK Signaling

Application Details

Application Notes:	<p>Immunohistochemistry: In paraffin embedded Human Kidney shows nuclear staining in the DCT. Recommended concentration, 4-8 µg/mL.</p> <p>Western Blot: In transfected HEK293 transiently expressing either Mouse MK5 fused to GFP or the similar Mouse MK2 fused to GFP , only the expected band was observed in the MK5 lane after EB11928 labeling. Data obtained from Dr. M. B. Menon, Inst. Bioche</p> <p>Peptide ELISA: antibody detection limit dilution 1:64000.</p>
Comment:	Immunoprecipitation: MK5/ERK3 double knockout Mouse Embryonic Fibroblasts (MEFs) retrovirally transduced with MK5/ERK3 or empty vector (GFP) were lysed from confluent plates and used for IP with 1.5ug EB11927 or EB11928. Western blots of
Restrictions:	For Research Use only

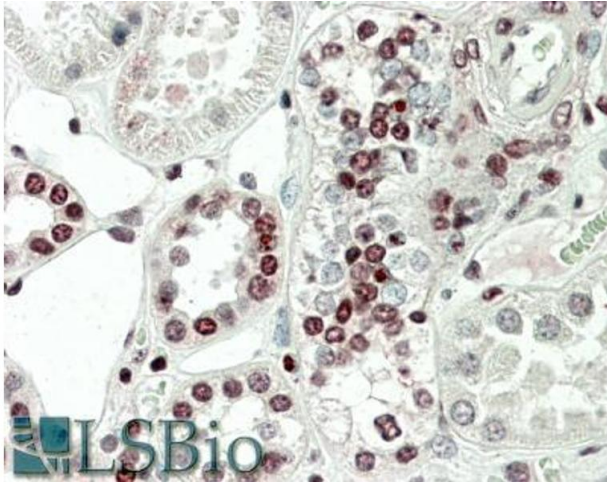
Handling

Format:	Liquid
Concentration:	0.5 mg/mL
Buffer:	Supplied at 0.5 mg/mL in Tris saline, 0.02 % sodium azide, pH 7.3 with 0.5 % bovine serum albumin.
Preservative:	Sodium azide
Precaution of Use:	This product contains Sodium azide: a POISONOUS AND HAZARDOUS SUBSTANCE which should be handled by trained staff only.
Handling Advice:	Minimize freezing and thawing.
Storage:	-20 °C

Handling

Storage Comment: Aliquot and store at -20°C, with minimal freeze/thawing. A working aliquot may be refrigerated at 4°C for a few weeks and still remain viable.

Images



Immunohistochemistry

Image 1. ABIN1590011 (5µg/ml) staining of paraffin embedded Human Kidney. Steamed antigen retrieval with citrate buffer pH 6, AP-staining.