

Datasheet for ABIN1590014
anti-ZNRF1 antibody (Internal Region)

3 Images

[Go to Product page](#)

Overview

Quantity:	100 µg
Target:	ZNRF1
Binding Specificity:	Internal Region
Reactivity:	Human, Mouse
Host:	Goat
Clonality:	Polyclonal
Conjugate:	This ZNRF1 antibody is un-conjugated
Application:	Western Blotting (WB), ELISA, Immunohistochemistry (IHC)

Product Details

Purpose:	ZNRF1 (mouse)
Sequence:	SDSTYAHGNG YQET
Isotype:	IgG
Specificity:	This antibody is expected to recognize reported isoforms a and b (NP_573469.1, NP_001162093.1). Reported variants represent identical protein: NP_001162092.1, NP_573469.1
Cross-Reactivity:	Cow, Dog, Human, Mouse, Pig, Rat
Purification:	Purified from goat serum by ammonium sulphate precipitation followed by antigen affinity chromatography using the immunizing peptide.
Grade:	Verified

Target Details

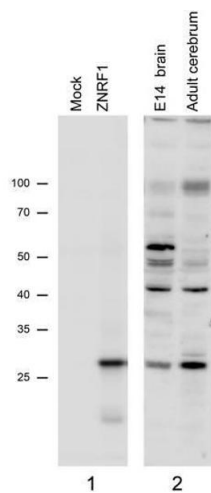
Target:	ZNRF1
Alternative Name:	Znrf1 (ZNRF1 Products)
Background:	Znrf1, zinc and ring finger 1, B830022L21Rik, MGC101991, Rnf42, Zrfp1, nin283, E3 ubiquitin-protein ligase ZNRF1, nerve injury-induced gene 283 protein, peripheral nerve injury protein nin283, ring finger protein 42, zinc ring finger protein 1, zinc/RING
Gene ID:	84937, 170737, 690769
NCBI Accession:	NP_573469 , NP_001162093

Application Details

Application Notes:	Immunohistochemistry: In paraffin embedded Mouse Cerebral Cortex shows colabeling with Neurofilament M. Recommended concentration, 10 µg/mL. Data obtained from Dr. Shuji Wakatsuki, National Institute of Neuroscience, Tokyo, Japan. Paraffin embedded Human Western Blot: Approx 28 kDa band observed in Mouse embryo and adult Brain lysates (right panel), consistent with the observed band in transfected N2a cells transiently expressing Znrf1(left panel) Calculated MW of 23.8 kDa according to NP_573469.1. Recomme Peptide ELISA: antibody detection limit dilution 1:32000.
Restrictions:	For Research Use only

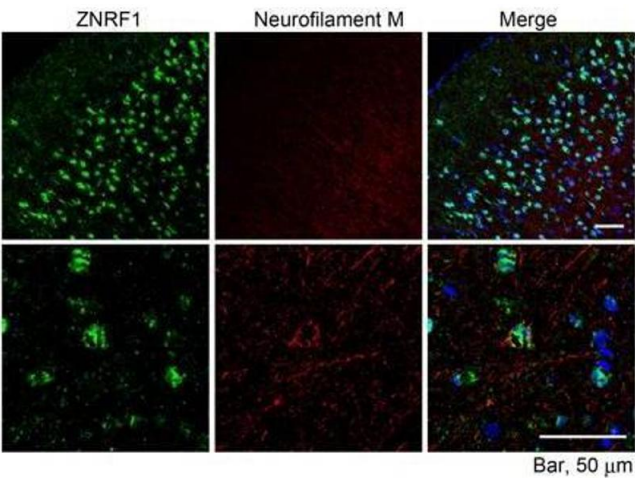
Handling

Format:	Liquid
Concentration:	0.5 mg/mL
Buffer:	Supplied at 0.5 mg/mL in Tris saline, 0.02 % sodium azide, pH 7.3 with 0.5 % bovine serum albumin.
Preservative:	Sodium azide
Precaution of Use:	This product contains Sodium azide: a POISONOUS AND HAZARDOUS SUBSTANCE which should be handled by trained staff only.
Handling Advice:	Minimize freezing and thawing.
Storage:	-20 °C
Storage Comment:	Aliquot and store at -20°C, with minimal freeze/thawing. A working aliquot may be refrigerated at 4°C for a few weeks and still remain viable.



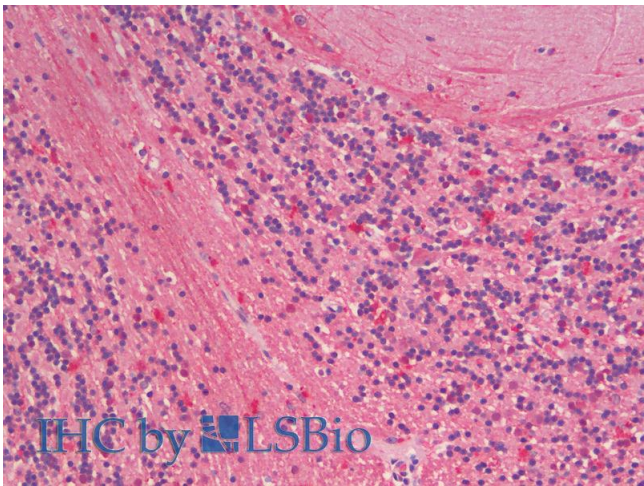
Western Blotting

Image 1. N2a overexpressing Mouse Znrfl (mock transfection in first lane) and probed with ABIN1590014 (1µg/ml), also staining of Mouse Brain lysates (Embryo E14 and adult cerebellum). Primary incubation was 1 hour. Detected by chemiluminescence.



Immunohistochemistry

Image 2. ABIN1590014 (10µg/ml) staining of paraffin embedded Mouse Cerebral Cortex. Microwaved antigen retrieval with citrate buffer pH 6, streptavidine-Alexa 488-staining after biotinylated anti-goat secondary.



Immunohistochemistry

Image 3. ABIN1590014 (5µg/ml) staining of paraffin embedded Human Cerebellum. Steamed antigen retrieval with citrate buffer pH 6, AP-staining.