

Datasheet for ABIN1590015
anti-PYCARD antibody (Internal Region)[Go to Product page](#)

5 Images

Overview

Quantity:	100 µg
Target:	PYCARD
Binding Specificity:	Internal Region
Reactivity:	Human, Mouse, Rat
Host:	Goat
Clonality:	Polyclonal
Conjugate:	This PYCARD antibody is un-conjugated
Application:	ELISA, Immunofluorescence (IF)

Product Details

Purpose:	Pycard (rodent)
Immunogen:	Peptide with sequence C-DLTDKLVSYYLES, from the internal region of the protein sequence according to NP_075747.3.
Sequence:	DLTDKLVSY LES
Isotype:	IgG
Cross-Reactivity:	Cow, Dog, Human, Mouse, Pig, Rat
Purification:	Purified from goat serum by ammonium sulphate precipitation followed by antigen affinity chromatography using the immunizing peptide.
Grade:	Verified

Target Details

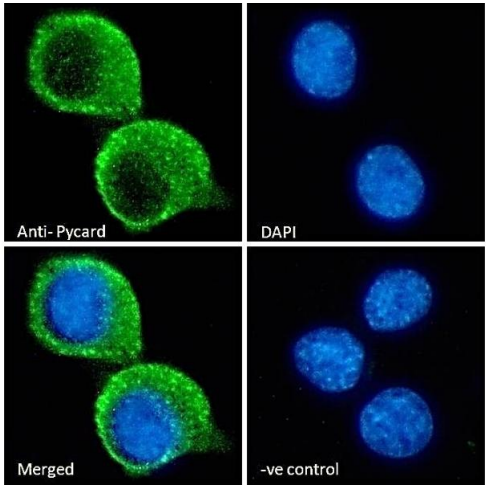
Target:	PYCARD
Alternative Name:	Pycard (PYCARD Products)
Background:	Pycard, PYD and CARD domain containing, 9130417A21Rik, Asc, CARD5, TMS-1, TNS1, masc, PYD and CARD domain-containing protein, apoptosis-associated speck-like protein containing a CARD
Gene ID:	29108, 66824, 282817
NCBI Accession:	NP_075747
Pathways:	Activation of Innate immune Response , Cellular Response to Molecule of Bacterial Origin , Regulation of Actin Filament Polymerization , Positive Regulation of Endopeptidase Activity , Activated T Cell Proliferation , Inflammasome

Application Details

Application Notes:	Peptide ELISA: antibody detection limit dilution 1:32000.
Comment:	Immunofluorescence: Strong expression of the protein seen in the cytoplasm of NIH3T3, KNRK and HeLa cells. Recommended concentration: 10µg/ml.
Restrictions:	For Research Use only

Handling

Format:	Liquid
Concentration:	0.5 mg/mL
Buffer:	Supplied at 0.5 mg/mL in Tris saline, 0.02 % sodium azide, pH 7.3 with 0.5 % bovine serum albumin.
Preservative:	Sodium azide
Precaution of Use:	This product contains Sodium azide: a POISONOUS AND HAZARDOUS SUBSTANCE which should be handled by trained staff only.
Handling Advice:	Minimize freezing and thawing.
Storage:	-20 °C
Storage Comment:	Aliquot and store at -20°C, with minimal freeze/thawing. A working aliquot may be refrigerated at 4°C for a few weeks and still remain viable.



Immunofluorescence

Image 1. ABIN1590015 Immunofluorescence analysis of paraformaldehyde fixed KNRK cells, permeabilized with 0.15 % Triton. Primary incubation 1hr (10 µg/mL) followed by Alexa Fluor 488 secondary antibody (2 µg/mL), showing cytoplasmic staining. The nuclear stain is DAPI (b

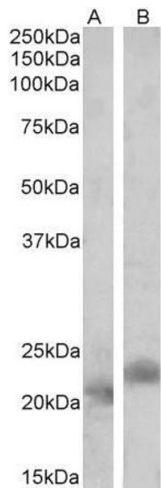


Image 2. ABIN1590015 (2 µg/mL) staining of Mouse (A) and Rat (B) Spleen lysates (35 µg protein in RIPA buffer). Primary incubation was 1 hour. Detected by chemiluminescence.



Western Blotting

Image 3. ABIN1590015 (0.5µg/ml) staining of Mouse Spleen lysate (35µg protein in RIPA buffer). Detected by chemiluminescence

Please check the [product details page](#) for more images. Overall 5 images are available for ABIN1590015.