



[Go to Product page](#)

Datasheet for ABIN1590018  
**anti-CBFB antibody (Internal Region)**

1 Image

Overview

Quantity:	100 µg
Target:	CBFB
Binding Specificity:	Internal Region
Reactivity:	Human
Host:	Goat
Clonality:	Polyclonal
Conjugate:	This CBFB antibody is un-conjugated
Application:	Western Blotting (WB), ELISA

Product Details

Purpose:	CBFB
Sequence:	EARRQQDPSP GSN
Isotype:	IgG
Specificity:	This antibody is expected to recognize reported isoform 1 (NP_074036.1) only, however it is expected to recognize reported mouse isoforms 1 (NP_071704.3), 2 (NP_001154928.1) and 3 (NP_001154929.1).
Cross-Reactivity:	Dog, Human, Mouse
Purification:	Purified from goat serum by ammonium sulphate precipitation followed by antigen affinity chromatography using the immunizing peptide.
Grade:	Verified

## Target Details

---

Target:	CBFB
Alternative Name:	CBFB ( <a href="#">CBFB Products</a> )
Background:	CBFB, core-binding factor, beta subunit, PEBP2B, CBF-beta, PEA2-beta, PEBP2-beta, SL3-3 enhancer factor 1 beta subunit, SL3-3 enhancer factor 1 subunit beta, SL3/AKV core-binding factor beta subunit, core-binding factor subunit beta, polyomavirus enhancer
Gene ID:	865, 12400
NCBI Accession:	<a href="#">NP_074036</a> , <a href="#">NP_001746</a>
Pathways:	<a href="#">Regulation of Lipid Metabolism by PPARalpha</a>

## Application Details

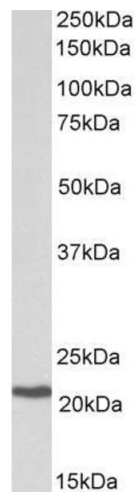
---

Application Notes:	Western Blot: Approx 22 kDa band observed in lysates of cell line Daudi (calculated MW of 22.0 kDa according to NP_074036.1). Recommended concentration: 0.3-1 µg/mL. Peptide ELISA: antibody detection limit dilution 1:2000.
Restrictions:	For Research Use only

## Handling

---

Format:	Liquid
Concentration:	0.5 mg/mL
Buffer:	Supplied at 0.5 mg/mL in Tris saline, 0.02 % sodium azide, pH 7.3 with 0.5 % bovine serum albumin.
Preservative:	Sodium azide
Precaution of Use:	This product contains Sodium azide: a POISONOUS AND HAZARDOUS SUBSTANCE which should be handled by trained staff only.
Handling Advice:	Minimize freezing and thawing.
Storage:	-20 °C
Storage Comment:	Aliquot and store at -20°C, with minimal freeze/thawing. A working aliquot may be refrigerated at 4°C for a few weeks and still remain viable.



### Western Blotting

**Image 1.** ABIN1590018 (0.3 $\mu$ g/ml) staining of Daudi lysate (35 $\mu$ g protein in RIPA buffer). Primary incubation was 1 hour. Detected by chemiluminescence.