

Datasheet for ABIN1590023
anti-E2F4 antibody (Internal Region)[Go to Product page](#)

1 Image

Overview

Quantity:	100 µg
Target:	E2F4
Binding Specificity:	Internal Region
Reactivity:	Human, Pig
Host:	Goat
Clonality:	Polyclonal
Conjugate:	This E2F4 antibody is un-conjugated
Application:	ELISA, Western Blotting (WB)

Product Details

Purpose:	Transcription factor E2F4
Sequence:	PKELSEIFDP TR
Isotype:	IgG
Cross-Reactivity:	Cow, Dog, Human, Mouse, Pig
Purification:	Purified from goat serum by ammonium sulphate precipitation followed by antigen affinity chromatography using the immunizing peptide.
Grade:	Verified

Target Details

Target:	E2F4
---------	------

Target Details

Alternative Name:	E2F4 (E2F4 Products)
Background:	E2F4, E2F transcription factor 4, p107/p130-binding, E2F-4, p107/p130-binding protein, transcription factor E2F4
Gene ID:	1874, 104394, 100360427
NCBI Accession:	NP_001941
Pathways:	Cell Division Cycle , Mitotic G1-G1/S Phases , Regulation of Cell Size

Application Details

Application Notes:	Western Blot: Approx 50 kDa band observed in lysates of cell lines A431 and HeLa (calculated MW of 44.0 kDa according to NP_001941.2). Recommended concentration: 0.1-0.3 µg/mL. Approx 40+50 kDa bands observed in Pig Brain and Heart lysates (calculated MW of Peptide ELISA: antibody detection limit dilution 1:128000.
Restrictions:	For Research Use only

Handling

Format:	Liquid
Concentration:	0.5 mg/mL
Buffer:	Supplied at 0.5 mg/mL in Tris saline, 0.02 % sodium azide, pH 7.3 with 0.5 % bovine serum albumin.
Preservative:	Sodium azide
Precaution of Use:	This product contains Sodium azide: a POISONOUS AND HAZARDOUS SUBSTANCE which should be handled by trained staff only.
Handling Advice:	Minimize freezing and thawing.
Storage:	-20 °C
Storage Comment:	Aliquot and store at -20°C, with minimal freeze/thawing. A working aliquot may be refrigerated at 4°C for a few weeks and still remain viable.

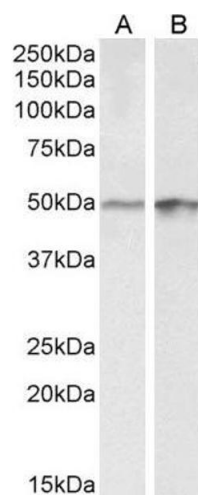


Image 1. ABIN1590023 (0.3 µg/mL) staining of A43 (A) and HeLa (B) lysates (35 µg protein in RIPA buffer). Primary incubation was 1 hour. Detected by chemiluminescence.