

Datasheet for ABIN1590024
anti-CREB1 antibody (AA 96-109)



[Go to Product page](#)

3 Images

Overview

Quantity:	100 µg
Target:	CREB1
Binding Specificity:	AA 96-109
Reactivity:	Human, Mouse
Host:	Goat
Clonality:	Polyclonal
Conjugate:	This CREB1 antibody is un-conjugated
Application:	Western Blotting (WB), Immunohistochemistry (IHC), ELISA

Product Details

Purpose:	CREB1 (aa96-109)
Sequence:	DSQESVDSVT DSQK
Isotype:	IgG
Specificity:	This antibody is expected to recognize both reported isoforms (NP_004370.1, NP_604391.1).
Cross-Reactivity:	Cow, Dog, Human, Mouse, Pig
Purification:	Purified from goat serum by ammonium sulphate precipitation followed by antigen affinity chromatography using the immunizing peptide.
Grade:	Verified

Target Details

Target:	CREB1
Alternative Name:	CREB1 (CREB1 Products)
Background:	CREB1, cAMP responsive element binding protein 1, CREB, CREB-1, active transcription factor CREB, cAMP-response element-binding protein-1, cAMP-responsive element-binding protein 1, cyclic AMP-responsive element-binding protein 1, transactivator protein
Gene ID:	1385, 12912
NCBI Accession:	NP_004370 , NP_604391
Pathways:	TLR Signaling , Fc-epsilon Receptor Signaling Pathway , EGFR Signaling Pathway , Neurotrophin Signaling Pathway , Thyroid Hormone Synthesis , Activation of Innate immune Response , Myometrial Relaxation and Contraction , Regulation of Cell Size , Toll-Like Receptors Cascades , G-protein mediated Events , Interaction of EGFR with phospholipase C-gamma , Positive Regulation of fat Cell Differentiation

Application Details

Application Notes:	Immunohistochemistry: Paraffin embedded Human Prostate. Recommended concentration: 2.5 µg/mL. Western Blot: Approx 45 kDa band observed in nuclear lysates of cell lines Jurkat and NIH3T3 (calculated MW of 36.7 kDa according to NP_604391.1). This molecular weight is routinely observed by other sources. Recommended concentration: 0.1-0.3 µg/mL. Primar Peptide ELISA: antibody detection limit dilution 1:128000.
Comment:	Additional validation: This antibody has been successfully used in the following paper: Sikorski et al. (2018) PMID: 30377371.
Restrictions:	For Research Use only

Handling

Format:	Liquid
Concentration:	0.5 mg/mL
Buffer:	Supplied at 0.5 mg/mL in Tris saline, 0.02 % sodium azide, pH 7.3 with 0.5 % bovine serum albumin.
Preservative:	Sodium azide
Precaution of Use:	This product contains Sodium azide: a POISONOUS AND HAZARDOUS SUBSTANCE which

Handling

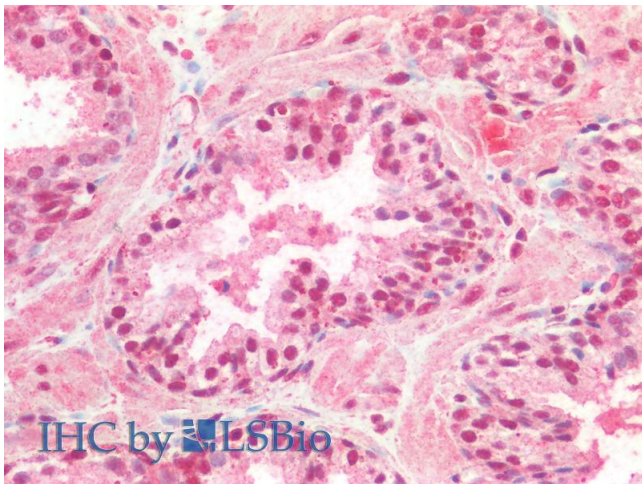
should be handled by trained staff only.

Handling Advice: Minimize freezing and thawing.

Storage: -20 °C

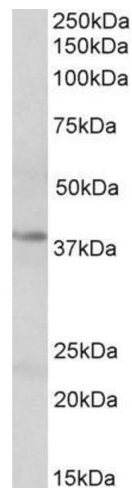
Storage Comment: Aliquot and store at -20°C, with minimal freeze/thawing. A working aliquot may be refrigerated at 4°C for a few weeks and still remain viable.

Images



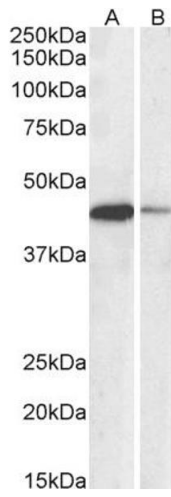
Immunohistochemistry

Image 1. ABIN1590024 (2.5µg/ml) staining of paraffin embedded Human Prostate. Steamed antigen retrieval with citrate buffer pH 6, AP-staining.



Western Blotting

Image 2. ABIN1590024 (0.1 µg/mL) staining of Jurkat nuclear lysate (35 µg protein in RIPA buffer). Primary incubation was 1 hour. Detected by chemiluminescence.



Western Blotting

Image 3. ABIN1590024 (0.1µg/ml) staining of Jurkat (A) and NIH3T3 (B) nuclear lysates (35µg protein in RIPA buffer). Detected by chemiluminescence.