

Datasheet for ABIN1590031

anti-SLAMF8 antibody (Internal Region)[Go to Product page](#)**2** Images

Overview

Quantity:	100 µg
Target:	SLAMF8
Binding Specificity:	Internal Region
Reactivity:	Human
Host:	Goat
Clonality:	Polyclonal
Conjugate:	This SLAMF8 antibody is un-conjugated
Application:	ELISA, Western Blotting (WB), Immunohistochemistry (IHC)

Product Details

Purpose:	SLAMF8
Sequence:	TLYHSRFLGR AQ
Isotype:	IgG
Cross-Reactivity:	Cow, Human, Mouse, Rat
Purification:	Purified from goat serum by ammonium sulphate precipitation followed by antigen affinity chromatography using the immunizing peptide.
Grade:	Verified

Target Details

Target:	SLAMF8
---------	--------

Target Details

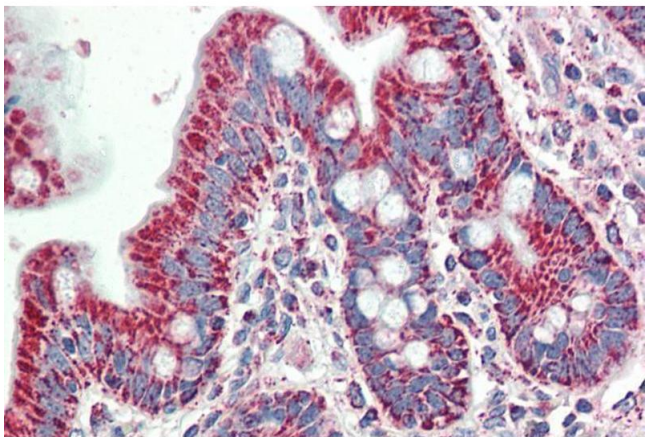
Alternative Name:	SLAMF8 (SLAMF8 Products)
Background:	SLAMF8, SLAM family member 8, BLAME, FLJ20442, MGC129578, SBBI42, B lymphocyte activator macrophage expressed, BCM-like membrane protein
Gene ID:	56833, 74748, 289237
NCBI Accession:	NP_064510

Application Details

Application Notes:	Immunohistochemistry: Paraffin embedded Human Small Intestine. Recommended concentration: 5 µg/mL. Western Blot: In transfected HEK293 transiently expressing Human SLAMF8 (myc and DYKDDDDK tagged), a band of approx. 45 kDa is observed. No bands are observed in mock-transfected HEK293 and the same band is observed using anti-myc antibody. Recommended c Peptide ELISA: antibody detection limit dilution 1:8000.
Restrictions:	For Research Use only

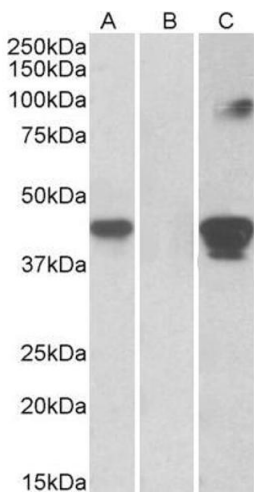
Handling

Format:	Liquid
Concentration:	0.5 mg/mL
Buffer:	Supplied at 0.5 mg/mL in Tris saline, 0.02 % sodium azide, pH 7.3 with 0.5 % bovine serum albumin.
Preservative:	Sodium azide
Precaution of Use:	This product contains Sodium azide: a POISONOUS AND HAZARDOUS SUBSTANCE which should be handled by trained staff only.
Handling Advice:	Minimize freezing and thawing.
Storage:	-20 °C
Storage Comment:	Aliquot and store at -20°C, with minimal freeze/thawing. A working aliquot may be refrigerated at 4°C for a few weeks and still remain viable.



Immunohistochemistry

Image 1. ABIN1590031 (5µg/ml) staining of paraffin embedded Human Small Intestine. Steamed antigen retrieval with citrate buffer pH 6, AP-staining.



Western Blotting

Image 2. HEK293 lysate (10ug protein in RIPA buffer) overexpressing Human SLAMF8 with C-terminal MYC tag probed with ABIN1590031 (1ug/ml) in Lane A and probed with anti-MYC Tag (1/1000) in lane C. Mock-transfected HEK293 probed with ABIN1590031 (1ug/ml) in Lane B. Primary incubation was 1 hour. Detected by chemiluminescence.