

Datasheet for ABIN1590032

**anti-Fascin antibody (Internal Region)**[Go to Product page](#)**1** Image

## Overview

Quantity:	100 µg
Target:	Fascin (FSCN1)
Binding Specificity:	Internal Region
Reactivity:	Human
Host:	Goat
Clonality:	Polyclonal
Conjugate:	This Fascin antibody is un-conjugated
Application:	Western Blotting (WB), ELISA

## Product Details

Purpose:	FSCN1
Sequence:	RDTKKCAFRT HT
Isotype:	IgG
Cross-Reactivity:	Cow, Human, Mouse, Rat
Purification:	Purified from goat serum by ammonium sulphate precipitation followed by antigen affinity chromatography using the immunizing peptide.
Grade:	Verified

## Target Details

Target:	Fascin (FSCN1)
---------	----------------

## Target Details

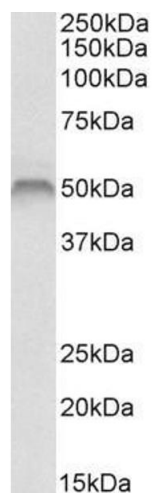
Alternative Name:	FSCN1 ( <a href="#">FSCN1 Products</a> )
Background:	FSCN1 , fascin homolog 1, actin-bundling protein (Strongylocentrotus purpuratus) , FLJ38511 , SNL , p55, Singed, drosophila, homolog-like , actin bundling protein , fascin 1 , singed , singed-like (fascin homolog, sea urchin)
Gene ID:	6624
NCBI Accession:	<a href="#">NP_003079</a>

## Application Details

Application Notes:	Western Blot: Approx 50 kDa band observed in Human Skeletal Muscle lysates (calculated MW of 54.5 kDa according to NP_003079.1). Recommended concentration: 1-3 µg/mL. Peptide ELISA: antibody detection limit dilution 1:4000.
Restrictions:	For Research Use only

## Handling

Format:	Liquid
Concentration:	0.5 mg/mL
Buffer:	Supplied at 0.5 mg/mL in Tris saline, 0.02 % sodium azide, pH 7.3 with 0.5 % bovine serum albumin.
Preservative:	Sodium azide
Precaution of Use:	This product contains Sodium azide: a POISONOUS AND HAZARDOUS SUBSTANCE which should be handled by trained staff only.
Handling Advice:	Minimize freezing and thawing.
Storage:	-20 °C
Storage Comment:	Aliquot and store at -20°C, with minimal freeze/thawing. A working aliquot may be refrigerated at 4°C for a few weeks and still remain viable.



**Image 1.** ABIN1590032 (1 µg/mL) staining of Human Skeletal Muscle lysate (35 µg protein in RIPA buffer). Primary incubation was 1 hour. Detected by chemiluminescence.