

Datasheet for ABIN1590033  
**anti-PIM2 antibody (AA 23-36)**[Go to Product page](#)

## 2 Images

## Overview

Quantity:	100 µg
Target:	PIM2
Binding Specificity:	AA 23-36
Reactivity:	Human
Host:	Goat
Clonality:	Polyclonal
Conjugate:	This PIM2 antibody is un-conjugated
Application:	Western Blotting (WB), Immunohistochemistry (IHC), ELISA

## Product Details

Purpose:	PIM2 (aa23-36)
Immunogen:	Peptide with sequence C-KDREAFAEYRLGP, from the internal region (near N Terminus) of the protein sequence according to NP_006866.2.
Sequence:	KDREAFAEY RLGP
Isotype:	IgG
Cross-Reactivity:	Cow, Human, Mouse, Rat
Purification:	Purified from goat serum by ammonium sulphate precipitation followed by antigen affinity chromatography using the immunizing peptide.
Grade:	Verified

## Target Details

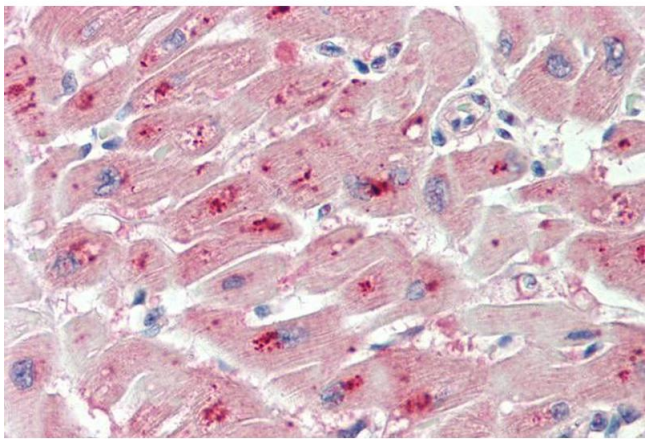
Target:	PIM2
Alternative Name:	PIM2 ( <a href="#">PIM2 Products</a> )
Background:	PIM2, pim-2 oncogene, pim-2h, proto-oncogene Pim-2 (serine threonine kinase), serine/threonine protein kinase pim-2, serine/threonine-protein kinase pim-2
Gene ID:	11040, 18715, 317366
NCBI Accession:	<a href="#">NP_006866</a>

## Application Details

Application Notes:	Immunohistochemistry: Paraffin embedded Human Heart. Recommended concentration: 5 µg/mL.  Western Blot: In transfected HEK293 transiently expressing Human PIM2 (myc and DYKDDDDK tagged), a band of approx. 38 kDa is observed. No bands are observed in mock-transfected HEK293 and the same band is observed using anti-myc antibody. Recommended concentration  Peptide ELISA: antibody detection limit dilution 1:64000.
Restrictions:	For Research Use only

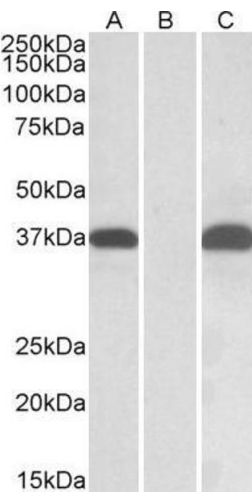
## Handling

Format:	Liquid
Concentration:	0.5 mg/mL
Buffer:	Supplied at 0.5 mg/mL in Tris saline, 0.02 % sodium azide, pH 7.3 with 0.5 % bovine serum albumin.
Preservative:	Sodium azide
Precaution of Use:	This product contains Sodium azide: a POISONOUS AND HAZARDOUS SUBSTANCE which should be handled by trained staff only.
Handling Advice:	Minimize freezing and thawing.
Storage:	-20 °C
Storage Comment:	Aliquot and store at -20°C, with minimal freeze/thawing. A working aliquot may be refrigerated at 4°C for a few weeks and still remain viable.



#### Immunohistochemistry

**Image 1.** ABIN1590033 (5µg/ml) staining of paraffin embedded Human Heart. Steamed antigen retrieval with citrate buffer pH 6, AP-staining.



#### Western Blotting

**Image 2.** HEK293 lysate (10ug protein in RIPA buffer) overexpressing Human PIM2 with C-terminal MYC tag probed with ABIN1590033 (0.1ug/ml) in Lane A and probed with anti-MYC Tag (1/1000) in lane C. Mock-transfected HEK293 probed with ABIN1590033 (0.1mg/ml) in Lane B. Primary incubation was 1 hour. Detected by chemiluminescence.