

Datasheet for ABIN1590035
anti-MDH1 antibody (AA 211-223)

2 Images

[Go to Product page](#)

Overview

Quantity:	100 µg
Target:	MDH1
Binding Specificity:	AA 211-223
Reactivity:	Human, Mouse, Rat, Pig
Host:	Goat
Clonality:	Polyclonal
Conjugate:	This MDH1 antibody is un-conjugated
Application:	Western Blotting (WB), ELISA

Product Details

Purpose:	MDH1 / MOR2 (aa211-223)
Sequence:	PDVNHAKVKL QGK
Isotype:	IgG
Specificity:	This antibody is expected to recognize all reported isoforms (NP_001186040.1, NP_005908.1, NP_001186041.1).
Cross-Reactivity:	Cow, Human, Mouse, Rat
Purification:	Purified from goat serum by ammonium sulphate precipitation followed by antigen affinity chromatography using the immunizing peptide.
Grade:	Verified

Target Details

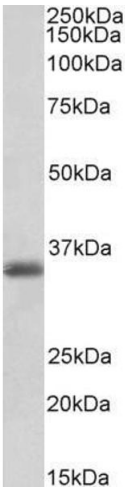
Target:	MDH1
Alternative Name:	MDH1 (MDH1 Products)
Background:	MDH1, malate dehydrogenase 1, NAD (soluble), MDH-s, MDHA, MGC:1375, MOR2, cytosolic malate dehydrogenase, malate dehydrogenase, cytoplasmic, soluble malate dehydrogenase
Gene ID:	4190, 17449, 24551
NCBI Accession:	NP_001186040 , NP_005908 , NP_001186041

Application Details

Application Notes:	Western Blot: Approx 35 kDa band observed in Human Mouse, Rat and Pig Heart lysates (calculated MW of 36.4 kDa according to NP_005908.1). Recommended concentration: 0.03-0.1 µg/mL. Peptide ELISA: antibody detection limit dilution 1:16000.
Restrictions:	For Research Use only

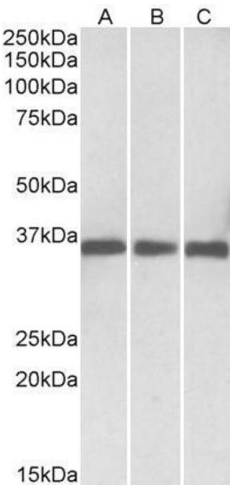
Handling

Format:	Liquid
Concentration:	0.5 mg/mL
Buffer:	Supplied at 0.5 mg/mL in Tris saline, 0.02 % sodium azide, pH 7.3 with 0.5 % bovine serum albumin.
Preservative:	Sodium azide
Precaution of Use:	This product contains Sodium azide: a POISONOUS AND HAZARDOUS SUBSTANCE which should be handled by trained staff only.
Handling Advice:	Minimize freezing and thawing.
Storage:	-20 °C
Storage Comment:	Aliquot and store at -20°C, with minimal freeze/thawing. A working aliquot may be refrigerated at 4°C for a few weeks and still remain viable.



Western Blotting

Image 1. ABIN1590035 (0.1µg/ml) staining of Pig Heart lysates (35µg protein in RIPA buffer). Primary incubation was 1 hour. Detected by chemiluminescence.



Western Blotting

Image 2. ABIN1590035 (0.03µg/ml) staining of Human (A), Mouse(B) and Rat (C) Heart lysates (35µg protein in RIPA buffer). Primary incubation was 1 hour. Detected by chemiluminescence.