



[Go to Product page](#)

Datasheet for ABIN1590037

anti-BCAR1 antibody (Internal Region)

2 Images

Overview

| | |
|----------------------|--|
| Quantity: | 100 µg |
| Target: | BCAR1 |
| Binding Specificity: | Internal Region |
| Reactivity: | Human |
| Host: | Goat |
| Clonality: | Polyclonal |
| Conjugate: | This BCAR1 antibody is un-conjugated |
| Application: | Western Blotting (WB), ELISA, Immunohistochemistry (IHC) |

Product Details

| | |
|-------------------|---|
| Purpose: | BCAR1 |
| Sequence: | KQTSTFSKQT PHH |
| Isotype: | IgG |
| Specificity: | This antibody is expected to recognize reported isoforms1, 2, 3, 5, 6 and 7. |
| Cross-Reactivity: | Dog, Human, Mouse, Rat |
| Purification: | Purified from goat serum by ammonium sulphate precipitation followed by antigen affinity chromatography using the immunizing peptide. |
| Grade: | Verified |

Target Details

| | |
|-------------------|---|
| Target: | BCAR1 |
| Alternative Name: | BCAR1 (BCAR1 Products) |
| Background: | BCAR1, breast cancer anti-estrogen resistance 1, CAS, CAS1, CASS1, CRKAS, P130Cas, Cas scaffolding protein family member 1, Crk-associated substrate p130Cas, breast cancer anti-estrogen resistance protein 1 |
| Gene ID: | 9564, 12927, 25414 |
| NCBI Accession: | NP_001164185 , NP_001164186 , NP_001164187 , NP_001164188 , NP_001164189 , NP_055382 , NP_001164190 , NP_001164191 , NP_001164192 |
| Pathways: | EGFR Signaling Pathway , Neurotrophin Signaling Pathway , CXCR4-mediated Signaling Events , Platelet-derived growth Factor Receptor Signaling |

Application Details

| | |
|--------------------|--|
| Application Notes: | Immunohistochemistry: In paraffin embedded Human Uterus shows strong staining at the glandular side of the endometrial epithelium. Recommended concentration, 5-10 µg/mL. Western Blot: Approx 100 kDa band observed in lysates of Human breast cancer and of cell line MCF7 (calculated MW of 97.9 kDa according to NP_001164185.1). Recommended concentration: 1-3 µg/mL. Peptide ELISA: antibody detection limit dilution 1:128000. |
| Restrictions: | For Research Use only |

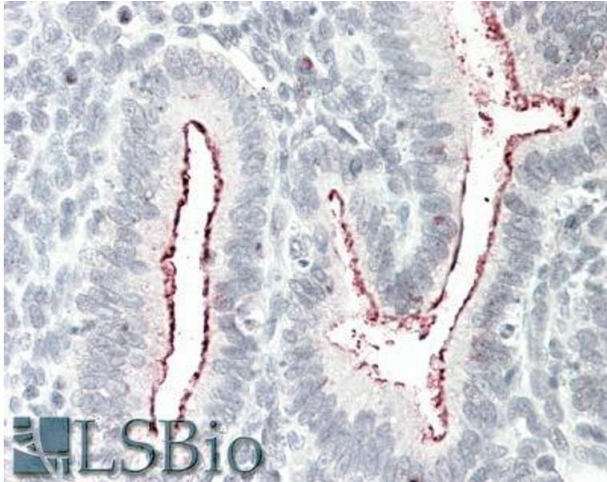
Handling

| | |
|--------------------|--|
| Format: | Liquid |
| Concentration: | 0.5 mg/mL |
| Buffer: | Supplied at 0.5 mg/mL in Tris saline, 0.02 % sodium azide, pH 7.3 with 0.5 % bovine serum albumin. |
| Preservative: | Sodium azide |
| Precaution of Use: | This product contains Sodium azide: a POISONOUS AND HAZARDOUS SUBSTANCE which should be handled by trained staff only. |
| Handling Advice: | Minimize freezing and thawing. |
| Storage: | -20 °C |

Handling

Storage Comment: Aliquot and store at -20°C , with minimal freeze/thawing. A working aliquot may be refrigerated at 4°C for a few weeks and still remain viable.

Images



Immunohistochemistry

Image 1. ABIN1590037 ($5\mu\text{g/ml}$) staining of paraffin embedded Human Uterus. Steamed antigen retrieval with citrate buffer pH 6, AP-staining.



Western Blotting

Image 2. ABIN1590037 ($1\mu\text{g/mL}$) staining of MCF7 (A) and Human Breast cancer (B) lysates ($35\mu\text{g}$ protein in RIPA buffer). Primary incubation was 1 hour. Detected by chemiluminescence.