

Datasheet for ABIN1590041  
**anti-MCF2L antibody (Internal Region)**[Go to Product page](#)

## 1 Image

## Overview

Quantity:	100 µg
Target:	MCF2L
Binding Specificity:	Internal Region
Reactivity:	Human
Host:	Goat
Clonality:	Polyclonal
Conjugate:	This MCF2L antibody is un-conjugated
Application:	Western Blotting (WB), ELISA

## Product Details

Purpose:	MCF2L
Sequence:	QLDNQATVQR
Isotype:	IgG
Specificity:	This antibody is expected to recognize both reported isoforms (NP_001106203.1, NP_079255.3).
Cross-Reactivity:	Cow, Dog, Human, Mouse, Rat
Purification:	Purified from goat serum by ammonium sulphate precipitation followed by antigen affinity chromatography using the immunizing peptide.
Grade:	Verified

## Target Details

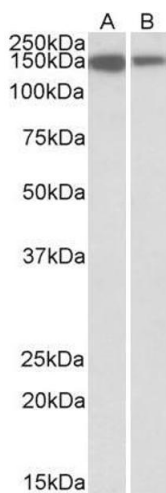
Target:	MCF2L
Alternative Name:	MCF2L ( <a href="#">MCF2L Products</a> )
Background:	MCF2L, MCF.2 cell line derived transforming sequence-like, ARHGEF14, DBS, FLJ12122, KIAA0362, OST, DBL's big sister, MCF2 transforming sequence-like protein, guanine nucleotide exchange factor DBS
Gene ID:	23263, 17207, 117020
NCBI Accession:	<a href="#">NP_001106203</a> , <a href="#">NP_079255</a>
Pathways:	<a href="#">Neurotrophin Signaling Pathway</a> , <a href="#">Metabolism of Steroid Hormones and Vitamin D</a> , <a href="#">Thyroid Hormone Synthesis</a>

## Application Details

Application Notes:	Western Blot: Approx 150 kDa band observed in lysates of cell line Jurkat and of Human Thymus (calculated MW of 131 kDa according to NP_001106203.1). Recommended concentration: 1-3 µg/mL. Peptide ELISA: antibody detection limit dilution 1:128000.
Restrictions:	For Research Use only

## Handling

Format:	Liquid
Concentration:	0.5 mg/mL
Buffer:	Supplied at 0.5 mg/mL in Tris saline, 0.02 % sodium azide, pH 7.3 with 0.5 % bovine serum albumin.
Preservative:	Sodium azide
Precaution of Use:	This product contains Sodium azide: a POISONOUS AND HAZARDOUS SUBSTANCE which should be handled by trained staff only.
Handling Advice:	Minimize freezing and thawing.
Storage:	-20 °C
Storage Comment:	Aliquot and store at -20°C, with minimal freeze/thawing. A working aliquot may be refrigerated at 4°C for a few weeks and still remain viable.



**Image 1.** ABIN1590041 (1 µg/mL) staining of Jurkat (A) and Human Thymus (B) lysates (35 µg protein in RIPA buffer). Primary incubation was 1 hour. Detected by chemiluminescence.