

Datasheet for ABIN1590058

**anti-Solute Carrier Family 17 (Vesicular Glutamate  
Transporter), Member 6 (SLC17A6) (AA 521-534) antibody**[Go to Product page](#)**1** Image

## Overview

Quantity:	100 µg
Target:	Solute Carrier Family 17 (Vesicular Glutamate Transporter), Member 6 (SLC17A6)
Binding Specificity:	AA 521-534
Reactivity:	Human
Host:	Goat
Clonality:	Polyclonal
Conjugate:	Un-conjugated
Application:	Western Blotting (WB), ELISA

## Product Details

Purpose:	VGLUT2 (aa521-534)
Sequence:	EDELDEETGD ITQN
Isotype:	IgG
Cross-Reactivity:	Cow, Dog, Human, Mouse, Pig, Rat
Purification:	Purified from goat serum by ammonium sulphate precipitation followed by antigen affinity chromatography using the immunizing peptide.
Grade:	Verified

## Target Details

Target:	Solute Carrier Family 17 (Vesicular Glutamate Transporter), Member 6 (SLC17A6)
---------	--

## Target Details

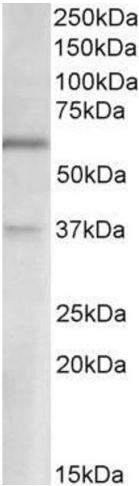
Alternative Name:	SLC17A6 ( <a href="#">SLC17A6 Products</a> )
Background:	SLC17A6, solute carrier family 17 (sodium-dependent inorganic phosphate cotransporter), member 6, DNPI, VGLUT2, differentiation-associated BNPI, differentiation-associated Na(+)-dependent inorganic phosphate cotransporter, differentiation-associated Na-de
Gene ID:	57084, 140919, 84487
NCBI Accession:	<a href="#">NP_065079</a>

## Application Details

Application Notes:	Western Blot: Approx 60 kDa band observed in Human Brain (Cerebellum) lysates (calculated MW of 64.4 kDa according to NP_065079.1. Recommended concentration: 1-3 µg/mL. An additional band of unknown identity was also consistently observed at 37 kDa. This b Peptide ELISA: antibody detection limit dilution 1:2000.
Restrictions:	For Research Use only

## Handling

Format:	Liquid
Concentration:	0.5 mg/mL
Buffer:	Supplied at 0.5 mg/mL in Tris saline, 0.02 % sodium azide, pH 7.3 with 0.5 % bovine serum albumin.
Preservative:	Sodium azide
Precaution of Use:	This product contains Sodium azide: a POISONOUS AND HAZARDOUS SUBSTANCE which should be handled by trained staff only.
Handling Advice:	Minimize freezing and thawing.
Storage:	-20 °C
Storage Comment:	Aliquot and store at -20°C, with minimal freeze/thawing. A working aliquot may be refrigerated at 4°C for a few weeks and still remain viable.



Western Blotting

**Image 1.** ABIN1590058 (2µg/ml) staining of Human Cerebellum lysate (35µg protein in RIPA buffer). Primary incubation was 1 hour. Detected by chemiluminescence.