



Datasheet for ABIN1590061
anti-MMP14 antibody (Internal Region)



[Go to Product page](#)

3 Images

Overview

Quantity:	100 µg
Target:	MMP14
Binding Specificity:	Internal Region
Reactivity:	Human, Mouse
Host:	Goat
Clonality:	Polyclonal
Conjugate:	This MMP14 antibody is un-conjugated
Application:	Western Blotting (WB), ELISA, Immunohistochemistry (IHC)

Product Details

Purpose:	MMP14
Sequence:	ESATPLRFRE VP
Isotype:	IgG
Cross-Reactivity:	Cow, Dog, Human, Mouse, Pig, Rat
Purification:	Purified from goat serum by ammonium sulphate precipitation followed by antigen affinity chromatography using the immunizing peptide.
Grade:	Verified

Target Details

Target:	MMP14
---------	-------

Target Details

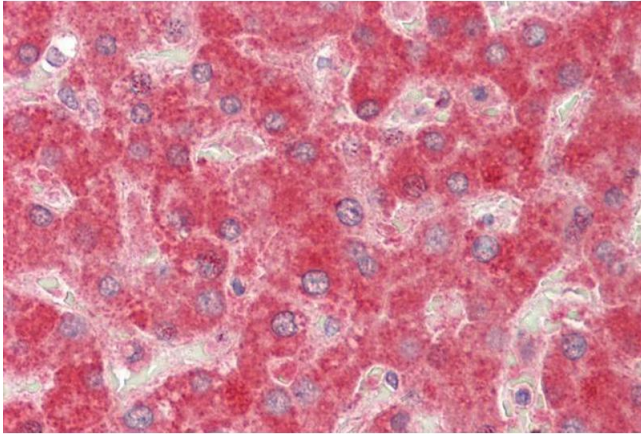
Alternative Name:	MMP14 (MMP14 Products)
Background:	MMP14, matrix metalloproteinase 14 (membrane-inserted), 1, MMP-14, MMP-X1, MT-MMP, MT-MMP 1, MT1-MMP, MT1MMP, MTMMP1, matrix metalloproteinase 14 (membrane-inserted), matrix metalloproteinase-14, membrane type 1 metalloprotease, membrane-type matrix metall
Gene ID:	4323, 17387, 81707
NCBI Accession:	NP_004986
Pathways:	Autophagy

Application Details

Application Notes:	<p>Immunohistochemistry: Paraffin embedded Human Liver. Recommended concentration: 5 μg/mL.</p> <p>Western Blot: Approx 60 kDa band observed in lysates of cell lines NIH3T3, A549 and HeLa (calculated MW of 65.9 kDa according to NP_004986.1). Recommended concentration: 1-3 μg/mL. Primary incubation was 1 hour.</p> <p>Peptide ELISA: antibody detection limit dilution 1:128000.</p>
Restrictions:	For Research Use only

Handling

Format:	Liquid
Concentration:	0.5 mg/mL
Buffer:	Supplied at 0.5 mg/mL in Tris saline, 0.02 % sodium azide, pH 7.3 with 0.5 % bovine serum albumin.
Preservative:	Sodium azide
Precaution of Use:	This product contains Sodium azide: a POISONOUS AND HAZARDOUS SUBSTANCE which should be handled by trained staff only.
Handling Advice:	Minimize freezing and thawing.
Storage:	-20 °C
Storage Comment:	Aliquot and store at -20°C, with minimal freeze/thawing. A working aliquot may be refrigerated at 4°C for a few weeks and still remain viable.



Immunohistochemistry

Image 1. ABIN1590061 (5µg/ml) staining of paraffin embedded Human Liver. Steamed antigen retrieval with citrate buffer pH 6, AP-staining.

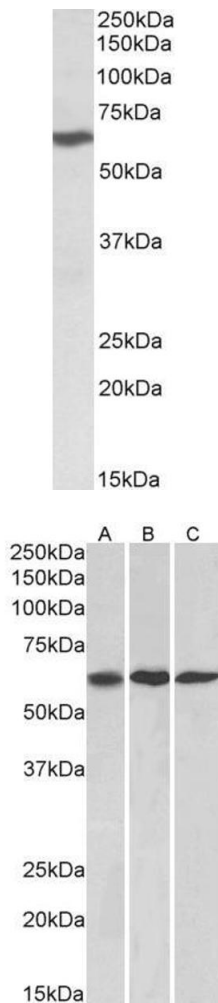


Image 2. ABIN1590061 (1 µg/mL) staining of A549 lysate (35 µg protein in RIPA buffer). Primary incubation was 1 hour. Detected by chemiluminescence.

Western Blotting

Image 3. ABIN1590061 (1µg/ml) staining of NIH3T3, (A) A549 (B) and HeLa (C) lysates (35µg protein in RIPA buffer). Detected by chemiluminescence.