

Datasheet for ABIN1590062
anti-CCDC3 antibody (AA 134-148)[Go to Product page](#)

2 Images

Overview

Quantity:	100 µg
Target:	CCDC3
Binding Specificity:	AA 134-148
Reactivity:	Human
Host:	Goat
Clonality:	Polyclonal
Conjugate:	This CCDC3 antibody is un-conjugated
Application:	Western Blotting (WB), ELISA, Immunohistochemistry (IHC)

Product Details

Purpose:	CCDC3 (aa134-148)
Sequence:	PHGVNFQDAI FPDTQ
Isotype:	IgG
Cross-Reactivity:	Cow, Dog, Human, Mouse, Pig, Rat
Purification:	Purified from goat serum by ammonium sulphate precipitation followed by antigen affinity chromatography using the immunizing peptide.
Grade:	Verified

Target Details

Target:	CCDC3
---------	-------

Target Details

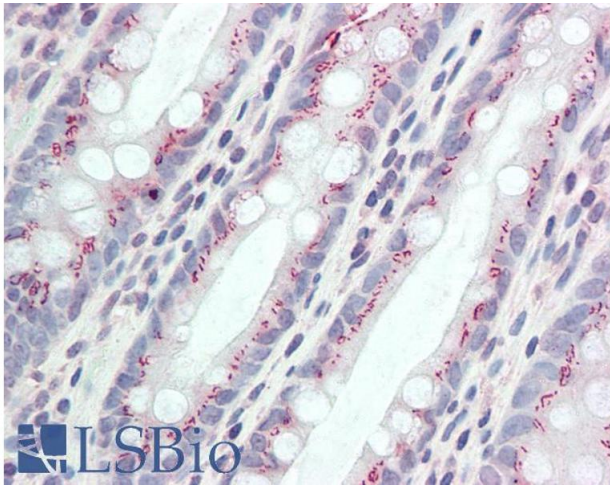
Alternative Name:	CCDC3 (CCDC3 Products)
Background:	CCDC3, coiled-coil domain containing 3, coiled-coil domain-containing protein 3, fat/vessel-derived secretory protein, favine
Gene ID:	83643, 74186, 498795
NCBI Accession:	NP_113643

Application Details

Application Notes:	Immunohistochemistry: Paraffin embedded Human Colon. Recommended concentration: 5 µg/mL. Western Blot: In transfected HEK293 transiently expressing Human CCDC3 (DYKDDDDK tagged), a band of approx. 36 kDa is observed. No bands are observed in mock-transfected HEK293 and the same band is observed using anti-DYKDDDDK antibody. Recommended concentration: 1 µg/mL. Peptide ELISA: antibody detection limit dilution 1:64000.
Restrictions:	For Research Use only

Handling

Format:	Liquid
Concentration:	0.5 mg/mL
Buffer:	Supplied at 0.5 mg/mL in Tris saline, 0.02 % sodium azide, pH 7.3 with 0.5 % bovine serum albumin.
Preservative:	Sodium azide
Precaution of Use:	This product contains Sodium azide: a POISONOUS AND HAZARDOUS SUBSTANCE which should be handled by trained staff only.
Handling Advice:	Minimize freezing and thawing.
Storage:	-20 °C
Storage Comment:	Aliquot and store at -20°C, with minimal freeze/thawing. A working aliquot may be refrigerated at 4°C for a few weeks and still remain viable.



Immunohistochemistry

Image 1. ABIN1590062 (5µg/ml) staining of paraffin embedded Human Colon. Steamed antigen retrieval with citrate buffer pH 6, AP-staining.

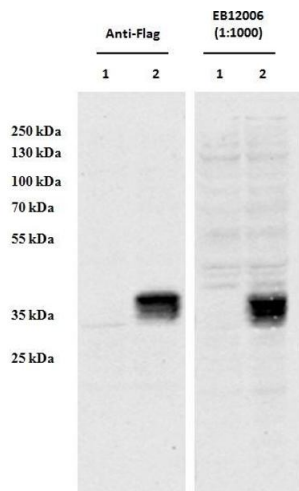


Image 2. HEK293 overexpressing Human CCDC3 with C-terminal tag (DYKDDDDK) and probed with anti-DYKDDDDK in the left panel and with ABIN1590062 (0.5 µg/mL) in the right panel (empty vector transfection in first lanes). Data obtained from Dr. YangXin Fu, Dept Oncology, University of Alberta, Edmonton, Canada.