

Datasheet for ABIN1590065
anti-CKM antibody (AA 258-270)



[Go to Product page](#)

2 Images

Overview

Quantity:	100 µg
Target:	CKM
Binding Specificity:	AA 258-270
Reactivity:	Human, Rat, Pig
Host:	Goat
Clonality:	Polyclonal
Conjugate:	This CKM antibody is un-conjugated
Application:	Western Blotting (WB), ELISA

Product Details

Purpose:	creatine kinase M-type (aa258-270)
Sequence:	QKIEEIFKKA GHP
Isotype:	IgG
Cross-Reactivity:	Cow, Dog, Human, Mouse, Pig, Rat
Purification:	Purified from goat serum by ammonium sulphate precipitation followed by antigen affinity chromatography using the immunizing peptide.
Grade:	Verified

Target Details

Target:	CKM
---------	-----

Target Details

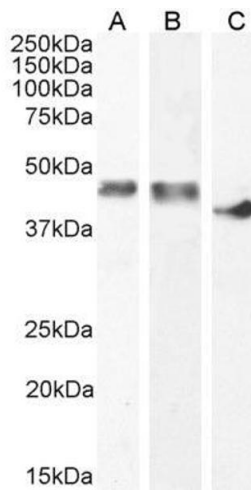
Alternative Name:	CKM (CKM Products)
Background:	CKM, creatine kinase, muscle, CKMM, M-CK, creatine kinase M chain, creatine kinase M-type, creatine kinase-M
Gene ID:	1158, 12715, 24265
NCBI Accession:	NP_001815

Application Details

Application Notes:	Western Blot: Approx 45 kDa band observed in Human and Pig Heart lysates, and approx 40 kDa in Rat Heart lysates (calculated MW of 43.1 kDa according to Human NP_001815.2 and 43 kDa according to Rat NP_036662.1 and Pig NP_001123421.1). Recommended concentration Peptide ELISA: antibody detection limit dilution 1:8000.
Restrictions:	For Research Use only

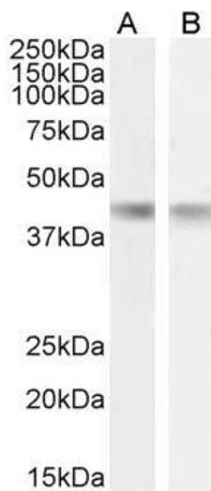
Handling

Format:	Liquid
Concentration:	0.5 mg/mL
Buffer:	Supplied at 0.5 mg/mL in Tris saline, 0.02 % sodium azide, pH 7.3 with 0.5 % bovine serum albumin.
Preservative:	Sodium azide
Precaution of Use:	This product contains Sodium azide: a POISONOUS AND HAZARDOUS SUBSTANCE which should be handled by trained staff only.
Handling Advice:	Minimize freezing and thawing.
Storage:	-20 °C
Storage Comment:	Aliquot and store at -20°C, with minimal freeze/thawing. A working aliquot may be refrigerated at 4°C for a few weeks and still remain viable.



Western Blotting

Image 1. ABIN1590065 (0.3 μ g/ml) staining of Human (A) Pig B) and (0.1 μ g/ml) Rat (C) Heart lysates (35 μ g protein in RIPA buffer). Detected by chemiluminescence.



Western Blotting

Image 2. ABIN1590065 (1 μ g/ml) staining of Mouse (A) and Rat (B) Heart lysate (35 μ g protein in RIPA buffer). Detected by chemiluminescence.