



[Go to Product page](#)

Datasheet for ABIN1590072

anti-EDF1 antibody (Internal Region)

2 Images

Overview

Quantity:	100 µg
Target:	EDF1
Binding Specificity:	Internal Region
Reactivity:	Human
Host:	Goat
Clonality:	Polyclonal
Conjugate:	This EDF1 antibody is un-conjugated
Application:	Western Blotting (WB), Immunohistochemistry (IHC), ELISA

Product Details

Purpose:	EDF1
Sequence:	NKQHSITKNT AKLDR
Isotype:	IgG
Specificity:	This antibody is expected to recognize both reported isoforms (NP_003783.1, NP_694880.1).
Cross-Reactivity:	Human, Mouse, Pig, Rat
Purification:	Purified from goat serum by ammonium sulphate precipitation followed by antigen affinity chromatography using the immunizing peptide.
Grade:	Verified

Target Details

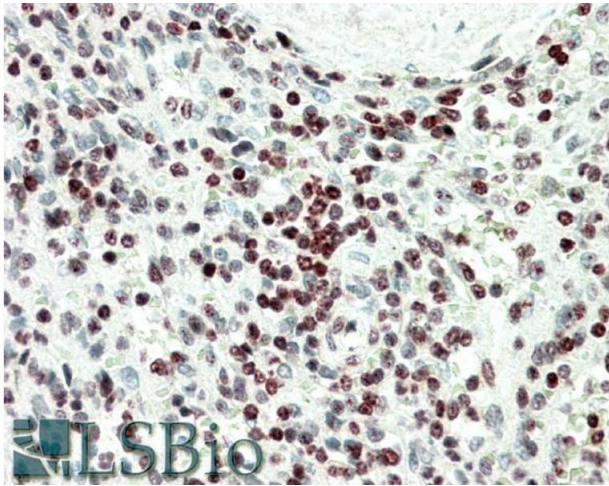
Target:	EDF1
Alternative Name:	EDF1 (EDF1 Products)
Background:	EDF1, endothelial differentiation-related factor 1, EDF-1, MBF1, multiprotein bridging factor 1
Gene ID:	8721, 59022, 678956
NCBI Accession:	NP_003783 , NP_694880

Application Details

Application Notes:	Immunohistochemistry: In paraffin embedded Human Spleen shows nuclear staining of select lymphocytes in the marginal zone. Recommended concentration, 5-10 µg/mL. Western Blot: Approx 17 kDa band observed in lysates of cell line A549 (calculated MW of 16.4 kDa according to NP_003783.1). Recommended concentration: 0.3-1 µg/mL. Peptide ELISA: antibody detection limit dilution 1:128000.
Restrictions:	For Research Use only

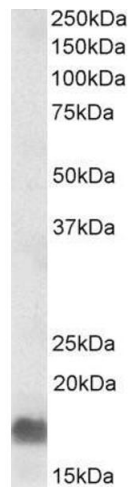
Handling

Format:	Liquid
Concentration:	0.5 mg/mL
Buffer:	Supplied at 0.5 mg/mL in Tris saline, 0.02 % sodium azide, pH 7.3 with 0.5 % bovine serum albumin.
Preservative:	Sodium azide
Precaution of Use:	This product contains Sodium azide: a POISONOUS AND HAZARDOUS SUBSTANCE which should be handled by trained staff only.
Handling Advice:	Minimize freezing and thawing.
Storage:	-20 °C
Storage Comment:	Aliquot and store at -20°C, with minimal freeze/thawing. A working aliquot may be refrigerated at 4°C for a few weeks and still remain viable.



Immunohistochemistry

Image 1. ABIN1590072 (5 μ g/ml) staining of paraffin embedded Human Spleen. Steamed antigen retrieval with citrate buffer pH 6, AP-staining.



Western Blotting

Image 2. ABIN1590072 (0.3 μ g/ml) staining of A549 lysate (35 μ g protein in RIPA buffer). Primary incubation was 1 hour. Detected by chemiluminescence.