



[Go to Product page](#)

Datasheet for ABIN1590074
anti-CRTC2 antibody (AA 542-553)

1 Image

Overview

Quantity:	100 µg
Target:	CRTC2
Binding Specificity:	AA 542-553
Reactivity:	Human
Host:	Goat
Clonality:	Polyclonal
Conjugate:	This CRTC2 antibody is un-conjugated
Application:	Western Blotting (WB), ELISA

Product Details

Purpose:	CRTC2 (aa542-553)
Sequence:	HGQQSYHRPM SD
Isotype:	IgG
Cross-Reactivity:	Cow, Human, Pig
Purification:	Purified from goat serum by ammonium sulphate precipitation followed by antigen affinity chromatography using the immunizing peptide.
Grade:	Verified

Target Details

Target:	CRTC2
---------	-------

Target Details

Alternative Name:	CRTC2 (CRTC2 Products)
Background:	CRTC2, CREB regulated transcription coactivator 2, TORC2, CREB-regulated transcription coactivator 2, OTTHUMP00000035255, TORC-2, transducer of CREB protein 2, transducer of regulated cAMP response element-binding protein (CREB) 2, transducer of regulated
Gene ID:	200186
NCBI Accession:	NP_859066
Pathways:	AMPK Signaling , Carbohydrate Homeostasis

Application Details

Application Notes:	Western Blot: Approx 75 to 80 kDa band observed in lysates of cell line HeLa (calculated MW of 73.3 kDa according to NP_859066.1). Recommended concentration: 1-3 µg/mL. Peptide ELISA: antibody detection limit dilution 1:64000.
Restrictions:	For Research Use only

Handling

Format:	Liquid
Concentration:	0.5 mg/mL
Buffer:	Supplied at 0.5 mg/mL in Tris saline, 0.02 % sodium azide, pH 7.3 with 0.5 % bovine serum albumin.
Preservative:	Sodium azide
Precaution of Use:	This product contains Sodium azide: a POISONOUS AND HAZARDOUS SUBSTANCE which should be handled by trained staff only.
Handling Advice:	Minimize freezing and thawing.
Storage:	-20 °C
Storage Comment:	Aliquot and store at -20°C, with minimal freeze/thawing. A working aliquot may be refrigerated at 4°C for a few weeks and still remain viable.

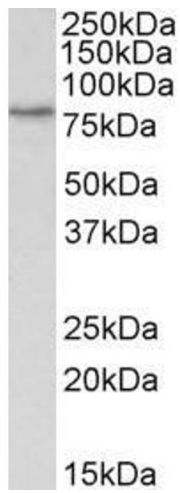


Image 1. ABIN1590074 (1 µg/mL) staining of HeLa lysate (35 µg protein in RIPA buffer). Primary incubation was 1 hour. Detected by chemiluminescence.