

Datasheet for ABIN1590075  
**anti-HOXC10 antibody (Internal Region)**[Go to Product page](#)

## 2 Images

## Overview

Quantity:	100 µg
Target:	HOXC10
Binding Specificity:	Internal Region
Reactivity:	Human
Host:	Goat
Clonality:	Polyclonal
Conjugate:	This HOXC10 antibody is un-conjugated
Application:	Western Blotting (WB), ELISA, Immunohistochemistry (IHC)

## Product Details

Purpose:	HOXC10
Sequence:	EQRASLNPR A EHLE
Isotype:	IgG
Cross-Reactivity:	Cow, Human, Pig
Purification:	Purified from goat serum by ammonium sulphate precipitation followed by antigen affinity chromatography using the immunizing peptide.
Grade:	Verified

## Target Details

Target:	HOXC10
---------	--------

## Target Details

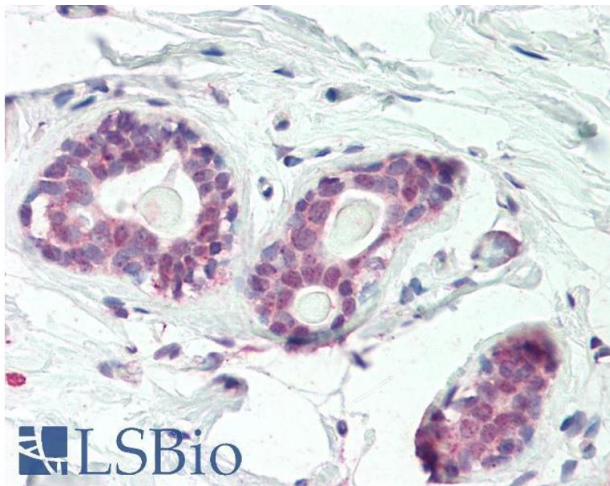
Alternative Name:	HOXC10 ( <a href="#">HOXC10 Products</a> )
Background:	HOXC10, homeobox C10, HOX3l, homeo box C10, homeobox protein Hox-3l, homeobox protein Hox-C10, homeoprotein C10
Gene ID:	3226
NCBI Accession:	<a href="#">NP_059105</a>

## Application Details

Application Notes:	<p>Immunohistochemistry: Paraffin embedded Human Breast. Recommended concentration: 5 µg/mL.</p> <p>Western Blot: Approx 36 kDa band observed in lysates of cell line HepG2 (calculated MW of 38.1 kDa according to NP_059105.2). Recommended concentration: 1-3 µg/mL. Primary incubation was 1 hour.</p> <p>Peptide ELISA: antibody detection limit dilution 1:64000.</p>
Restrictions:	For Research Use only

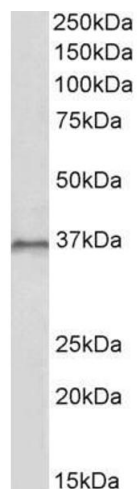
## Handling

Format:	Liquid
Concentration:	0.5 mg/mL
Buffer:	Supplied at 0.5 mg/mL in Tris saline, 0.02 % sodium azide, pH 7.3 with 0.5 % bovine serum albumin.
Preservative:	Sodium azide
Precaution of Use:	This product contains Sodium azide: a POISONOUS AND HAZARDOUS SUBSTANCE which should be handled by trained staff only.
Handling Advice:	Minimize freezing and thawing.
Storage:	-20 °C
Storage Comment:	Aliquot and store at -20°C, with minimal freeze/thawing. A working aliquot may be refrigerated at 4°C for a few weeks and still remain viable.



#### Immunohistochemistry

**Image 1.** ABIN1590075 (5µg/ml) staining of paraffin embedded Human Breast. Steamed antigen retrieval with citrate buffer pH 6, AP-staining.



**Image 2.** ABIN1590075 (1 µg/mL) staining of HepG2 lysate (35 µg protein in RIPA buffer). Primary incubation was 1 hour. Detected by chemiluminescence.