

Datasheet for ABIN1590084
anti-PKC beta antibody (Internal Region)[Go to Product page](#)

3 Images

Overview

Quantity:	100 µg
Target:	PKC beta (PRKCB)
Binding Specificity:	Internal Region
Reactivity:	Human, Rat
Host:	Goat
Clonality:	Polyclonal
Conjugate:	This PKC beta antibody is un-conjugated
Application:	Western Blotting (WB), ELISA, Immunohistochemistry (IHC)

Product Details

Purpose:	PRKCB
Sequence:	DKEFTRQPVE LT
Isotype:	IgG
Specificity:	This antibody is expected to recognize isoform 1 (NP_997700.1) only.
Cross-Reactivity:	Dog, Human, Rat
Purification:	Purified from goat serum by ammonium sulphate precipitation followed by antigen affinity chromatography using the immunizing peptide.
Grade:	Verified

Target Details

Target:	PKC beta (PRKCB)
Alternative Name:	PRKCB (PRKCB Products)
Background:	PRKCB, protein kinase C, beta, MGC41878, PKC-beta, PKCB, PRKCB1, PRKCB2, OTTHUMP00000162377, OTTHUMP00000162378, PKC-B, protein kinase C beta type, protein kinase C, beta 1 polypeptide
Gene ID:	5579
NCBI Accession:	NP_997700
Pathways:	WNT Signaling , TCR Signaling , Thyroid Hormone Synthesis , Nuclear Hormone Receptor Binding , Chromatin Binding , Myometrial Relaxation and Contraction , VEGF Signaling , Unfolded Protein Response , BCR Signaling

Application Details

Application Notes:	<p>Immunohistochemistry: In paraffin embedded Human Spleen shows nucleolar staining in some splenocytes. Recommended concentration, 1-2 µg/mL.</p> <p>Western Blot: Approx 80 kDa band observed in lysates of Human Placenta and Rat Brain (calculated MW of 76.9 kDa according to NP_997700.1). Recommended concentration: 0.1-0.3 µg/mL.</p> <p>Peptide ELISA: antibody detection limit dilution 1:128000.</p>
Comment:	Additional validation: This antibody has been successfully used in the following paper: Sikorski et al. (2018) PMID: 30377371.
Restrictions:	For Research Use only

Handling

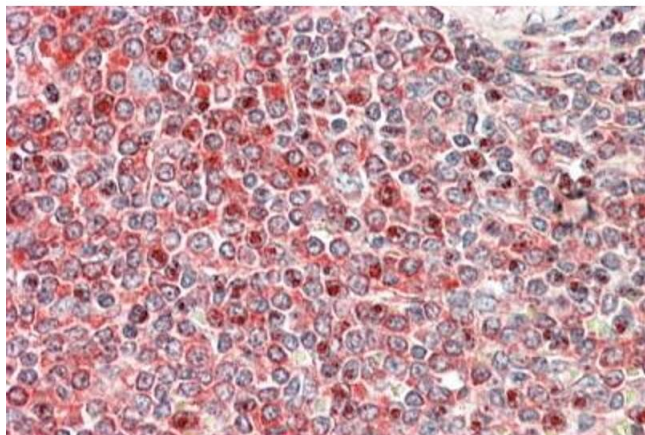
Format:	Liquid
Concentration:	0.5 mg/mL
Buffer:	Supplied at 0.5 mg/mL in Tris saline, 0.02 % sodium azide, pH 7.3 with 0.5 % bovine serum albumin.
Preservative:	Sodium azide
Precaution of Use:	This product contains Sodium azide: a POISONOUS AND HAZARDOUS SUBSTANCE which should be handled by trained staff only.
Handling Advice:	Minimize freezing and thawing.

Handling

Storage: -20 °C

Storage Comment: Aliquot and store at -20°C, with minimal freeze/thawing. A working aliquot may be refrigerated at 4°C for a few weeks and still remain viable.

Images



Immunohistochemistry

Image 1. ABIN1590084 (5µg/ml) staining of paraffin embedded Human Spleen. Steamed antigen retrieval with citrate buffer pH 6, AP-staining.

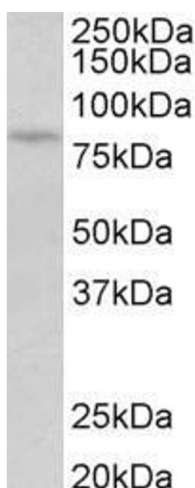


Image 2. ABIN1590084 (0.1 µg/mL) staining of Human Placenta lysate (35 µg protein in RIPA buffer). Primary incubation was 1 hour. Detected by chemiluminescence.



Western Blotting

Image 3. ABIN1590084 (0.3µg/ml) staining of Human Placenta (A) and Rat Brain (B) lysates (35µg protein in RIPA buffer). Primary incubation was 1 hour. Detected by chemiluminescence.