

Datasheet for ABIN1590085

anti-SYVN1 antibody (Internal Region)[Go to Product page](#)

4 Images

Overview

Quantity:	100 µg
Target:	SYVN1
Binding Specificity:	Internal Region
Reactivity:	Human, Rat
Host:	Goat
Clonality:	Polyclonal
Conjugate:	This SYVN1 antibody is un-conjugated
Application:	Western Blotting (WB), ELISA, Flow Cytometry (FACS), Immunofluorescence (IF)

Product Details

Purpose:	SYVN1
Sequence:	HERQHLEARL QS
Isotype:	IgG
Specificity:	This antibody is expected to recognize isoforms a and b (NP_115807.1, NP_757385.1).
Cross-Reactivity:	Dog, Human, Mouse, Rat
Purification:	Purified from goat serum by ammonium sulphate precipitation followed by antigen affinity chromatography using the immunizing peptide.
Grade:	Verified

Target Details

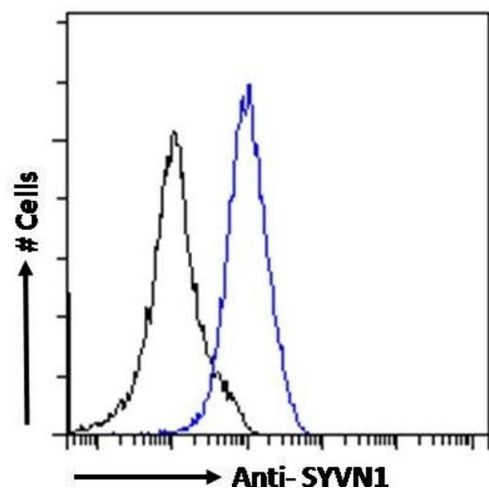
Target:	SYVN1
Alternative Name:	SYVN1 (SYVN1 Products)
Background:	SYVN1, synovial apoptosis inhibitor 1, synoviolin, HRD1, KIAA1810, MGC40372, synoviolin 1
Gene ID:	84447, 361712
NCBI Accession:	NP_115807 , NP_757385
Pathways:	ER-Nucleus Signaling , Negative Regulation of intrinsic apoptotic Signaling

Application Details

Application Notes:	Western Blot: Approx 70 kDa band observed in Human Cerebellum and Rat Lung lysates (calculated MW of 67.6 kDa according to Human NP_115807.1 and 66.9 kDa according to Rat NP_001094209.1). Recommended concentration: 1-3 µg/mL. Primary incubation 1 hour at room temperature. Peptide ELISA: antibody detection limit dilution 1:32000.
Comment:	Immunofluorescence: Strong expression of the protein seen in the nuclei and endoplasmic reticulum of A431 cells. Recommended concentration: 10µg/ml. Flow Cytometry: Flow cytometric analysis of A431 cells. Recommended concentration: 10µg/ml.
Restrictions:	For Research Use only

Handling

Format:	Liquid
Concentration:	0.5 mg/mL
Buffer:	Supplied at 0.5 mg/mL in Tris saline, 0.02 % sodium azide, pH 7.3 with 0.5 % bovine serum albumin.
Preservative:	Sodium azide
Precaution of Use:	This product contains Sodium azide: a POISONOUS AND HAZARDOUS SUBSTANCE which should be handled by trained staff only.
Handling Advice:	Minimize freezing and thawing.
Storage:	-20 °C
Storage Comment:	Aliquot and store at -20°C, with minimal freeze/thawing. A working aliquot may be refrigerated at 4°C for a few weeks and still remain viable.



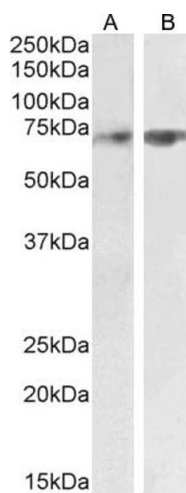
Flow Cytometry

Image 1. ABIN1590085 Flow cytometric analysis of paraformaldehyde fixed A431 cells (blue line), permeabilized with 0.5 % Triton. Primary incubation 1hr (10 µg/mL) followed by Alexa Fluor 488 secondary antibody (1 µg/mL). IgG control: Unimmunized goat IgG (black line) fol



Western Blotting

Image 2. ABIN1590085 (2µg/ml) staining of Human Cerebellum lysate (35µg protein in RIPA buffer). Primary incubation was 1 hour. Detected by chemiluminescence.



Western Blotting

Image 3. ABIN1590085 (2 µg/mL) staining of Human Cerebellum (A) and Rat Lung (B) lysate (35 µg protein in RIPA buffer). Detected by chemiluminescence.

Please check the [product details page](#) for more images. Overall 4 images are available for ABIN1590085.