



Datasheet for ABIN1590087
anti-ATF6 antibody (AA 437-449)



[Go to Product page](#)

5 Images

Overview

Quantity:	100 µg
Target:	ATF6
Binding Specificity:	AA 437-449
Reactivity:	Human
Host:	Goat
Clonality:	Polyclonal
Conjugate:	This ATF6 antibody is un-conjugated
Application:	Western Blotting (WB), ELISA, Immunofluorescence (IF), Flow Cytometry (FACS)

Product Details

Purpose:	ATF6 (aa437-449)
Sequence:	NSYRYDHSVS NDK
Isotype:	IgG
Cross-Reactivity:	Cow, Dog, Human, Pig, Rat
Purification:	Purified from goat serum by ammonium sulphate precipitation followed by antigen affinity chromatography using the immunizing peptide.
Grade:	Verified

Target Details

Target:	ATF6
---------	------

Target Details

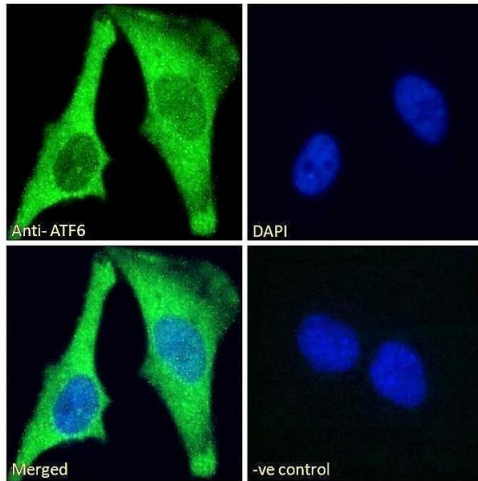
Alternative Name:	ATF6 (ATF6 Products)
Background:	ATF6, activating transcription factor 6, ATF6A, cAMP-dependent transcription factor ATF-6 alpha, cyclic AMP-dependent transcription factor ATF-6 alpha
Gene ID:	22926, 304962
NCBI Accession:	NP_031374
Pathways:	ER-Nucleus Signaling , Unfolded Protein Response

Application Details

Application Notes:	Western Blot: Approx 75-80 kDa band observed in lysates of cell lines HeLa and MCF7, and in HeLa and Jurkat nuclear cell lysates (calculated MW of 74.6 kDa according to NP_031374.2). Recommended concentration: 0.3-2 µg/mL. Primary incubation 1 hour at room temperature. Peptide ELISA: antibody detection limit dilution 1:128000.
Comment:	Immunofluorescence: Strong expression of the protein seen in the cytoplasm of A431 and HeLa cells. Recommended concentration: 10µg/ml. Flow Cytometry: Flow cytometric analysis of A431 cells. Recommended concentration:
Restrictions:	For Research Use only

Handling

Format:	Liquid
Concentration:	0.5 mg/mL
Buffer:	Supplied at 0.5 mg/mL in Tris saline, 0.02 % sodium azide, pH 7.3 with 0.5 % bovine serum albumin.
Preservative:	Sodium azide
Precaution of Use:	This product contains Sodium azide: a POISONOUS AND HAZARDOUS SUBSTANCE which should be handled by trained staff only.
Handling Advice:	Minimize freezing and thawing.
Storage:	-20 °C
Storage Comment:	Aliquot and store at -20°C, with minimal freeze/thawing. A working aliquot may be refrigerated at 4°C for a few weeks and still remain viable.

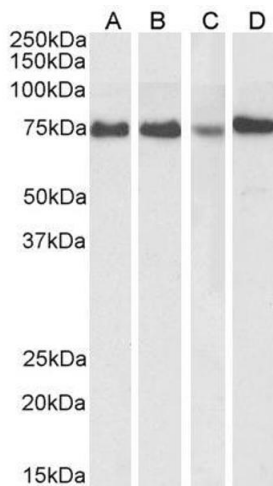


Immunofluorescence

Image 1. ABIN1590087 Immunofluorescence analysis of paraformaldehyde fixed HeLa cells, permeabilized with 0.15% Triton. Primary incubation 1hr (10ug/ml) followed by Alexa Fluor 488 secondary antibody (2ug/ml), showing cytoplasmic staining. The nuclear stain is DAPI (blue). Negative control: Unimmunized goat IgG (10ug/ml) followed by Alexa Fluor 488 secondary antibody (2ug/ml).



Image 2. ABIN1590087 (2 µg/mL) staining of HeLa lysate (35 µg protein in RIPA buffer). Primary incubation was 1 hour. Detected by chemiluminescence.



Western Blotting

Image 3. ABIN1590087 (1µg/ml) staining of HeLa (A) and MCF7 (B) cell lysate, and HeLa (C) and Jurkat (D) nuclear cell lysate(35µg protein in RIPA buffer). Detected by chemiluminescence.

Please check the [product details page](#) for more images. Overall 5 images are available for ABIN1590087.