

Datasheet for ABIN1590090
anti-CP110 antibody (N-Term)[Go to Product page](#)

1 Image

Overview

Quantity:	100 µg
Target:	CP110 (CCP110)
Binding Specificity:	N-Term
Reactivity:	Human
Host:	Goat
Clonality:	Polyclonal
Conjugate:	This CP110 antibody is un-conjugated
Application:	Western Blotting (WB), ELISA

Product Details

Purpose:	CP110
Sequence:	CEKSLARIQE AS
Isotype:	IgG
Specificity:	This antibody is expected to recognize both reported isoforms (NP_001185951.1, NP_055526.3).
Cross-Reactivity:	Human
Purification:	Purified from goat serum by ammonium sulphate precipitation followed by antigen affinity chromatography using the immunizing peptide.
Grade:	Verified

Target Details

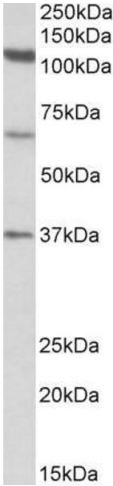
Target:	CP110 (CCP110)
Alternative Name:	CP110 (CCP110 Products)
Background:	CP110, -, Cep110, DKFZp781G1416, KIAA0419, OTTHUMP00000162162, centrosomal protein CP110, centrosomal protein of 110 kDa
Gene ID:	9738
NCBI Accession:	NP_001185951 , NP_055526
Pathways:	M Phase

Application Details

Application Notes:	Western Blot: Approx 110 kDa band observed in Human Testis lysates (calculated MW of 113 kDa according to NP_001185951.1). Recommended concentration: 0.3-1 µg/mL. Additional bands of unknown identity were also consistently observed at 65 kDa and 37 kDa. These Peptide ELISA: antibody detection limit dilution 1:32000.
Restrictions:	For Research Use only

Handling

Format:	Liquid
Concentration:	0.5 mg/mL
Buffer:	Supplied at 0.5 mg/mL in Tris saline, 0.02 % sodium azide, pH 7.3 with 0.5 % bovine serum albumin.
Preservative:	Sodium azide
Precaution of Use:	This product contains Sodium azide: a POISONOUS AND HAZARDOUS SUBSTANCE which should be handled by trained staff only.
Handling Advice:	Minimize freezing and thawing.
Storage:	-20 °C
Storage Comment:	Aliquot and store at -20°C, with minimal freeze/thawing. A working aliquot may be refrigerated at 4°C for a few weeks and still remain viable.



Western Blotting

Image 1. ABIN1590090 (1µg/ml) staining of Human Testis lysate (35µg protein in RIPA buffer). Primary incubation was 1 hour. Detected by chemiluminescence.