

Datasheet for ABIN1590093  
**anti-CREB3 antibody (AA 76-87)**



[Go to Product page](#)

1 Image

### Overview

Quantity:	100 µg
Target:	CREB3
Binding Specificity:	AA 76-87
Reactivity:	Human
Host:	Goat
Clonality:	Polyclonal
Conjugate:	This CREB3 antibody is un-conjugated
Application:	Western Blotting (WB), ELISA, Immunohistochemistry (IHC)

### Product Details

Purpose:	CREB3 (aa76-87)
Sequence:	HHDHTYSLPR ET
Isotype:	IgG
Cross-Reactivity:	Human
Purification:	Purified from goat serum by ammonium sulphate precipitation followed by antigen affinity chromatography using the immunizing peptide.
Grade:	Verified

### Target Details

Target:	CREB3
---------	-------

## Target Details

---

Alternative Name:	CREB3 ( <a href="#">CREB3 Products</a> )
Background:	CREB3, cAMP responsive element binding protein 3, LUMAN, LZIP, CREB-3, basic leucine zipper protein, cAMP-responsive element-binding protein 3, cyclic AMP response element (CRE)-binding protein/activating transcription factor 1, cyclic AMP-responsive elem
Gene ID:	10488
NCBI Accession:	<a href="#">NP_006359</a>
Pathways:	<a href="#">Thyroid Hormone Synthesis</a> , <a href="#">Myometrial Relaxation and Contraction</a> , <a href="#">ER-Nucleus Signaling</a> , <a href="#">Maintenance of Protein Location</a> , <a href="#">Unfolded Protein Response</a>

## Application Details

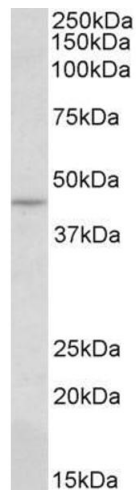
---

Application Notes:	Immunohistochemistry: Paraffin embedded Human Skin. Recommended concentration: 5 µg/mL. Western Blot: Approx 45 kDa band observed in lysates of cell line HepG2 (calculated MW of 41.4 kDa according to NP_006359.3). Recommended concentration: 0.3-1 µg/mL. Primary incubation was 1 hour. Peptide ELISA: antibody detection limit dilution 1:128000.
Restrictions:	For Research Use only

## Handling

---

Format:	Liquid
Concentration:	0.5 mg/mL
Buffer:	Supplied at 0.5 mg/mL in Tris saline, 0.02 % sodium azide, pH 7.3 with 0.5 % bovine serum albumin.
Preservative:	Sodium azide
Precaution of Use:	This product contains Sodium azide: a POISONOUS AND HAZARDOUS SUBSTANCE which should be handled by trained staff only.
Handling Advice:	Minimize freezing and thawing.
Storage:	-20 °C
Storage Comment:	Aliquot and store at -20°C, with minimal freeze/thawing. A working aliquot may be refrigerated at 4°C for a few weeks and still remain viable.



### Western Blotting

**Image 1.** ABIN1590093 (0.3µg/ml) staining of HepG2 lysate (35µg protein in RIPA buffer). Detected by chemiluminescence.