



[Go to Product page](#)

Datasheet for ABIN1590096  
**anti-SLAMF8 antibody (C-Term)**

1 Image

Overview

Quantity:	100 µg
Target:	SLAMF8
Binding Specificity:	C-Term
Reactivity:	Human
Host:	Goat
Clonality:	Polyclonal
Conjugate:	This SLAMF8 antibody is un-conjugated
Application:	ELISA, Western Blotting (WB), Immunohistochemistry (IHC)

Product Details

Purpose:	SLAMF8
Sequence:	HADRVGPETE NP
Isotype:	IgG
Cross-Reactivity:	Human
Purification:	Purified from goat serum by ammonium sulphate precipitation followed by antigen affinity chromatography using the immunizing peptide.
Grade:	Verified

Target Details

Target:	SLAMF8
---------	--------

## Target Details

---

Alternative Name:	SLAMF8 ( <a href="#">SLAMF8 Products</a> )
Background:	SLAMF8, SLAM family member 8, BLAME, FLJ20442, MGC129578, SBBI42, B lymphocyte activator macrophage expressed, BCM-like membrane protein
Gene ID:	56833
NCBI Accession:	<a href="#">NP_064510</a>

## Application Details

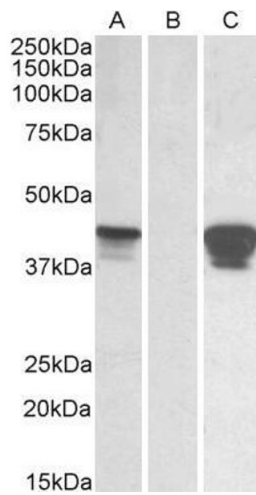
---

Application Notes:	Immunohistochemistry: Paraffin embedded Human Small Intestine. Recommended concentration: 5 µg/mL. Western Blot: In transfected HEK293 transiently expressing Human SLAMF8 a band of approx. 45 kDa is observed. This band is not observed in the non-transfected HEK293. The calculated molecular size is 31.7 kDa according to NP_064510.1. Recommended concentra Peptide ELISA: antibody detection limit dilution 1:32000.
Restrictions:	For Research Use only

## Handling

---

Format:	Liquid
Concentration:	0.5 mg/mL
Buffer:	Supplied at 0.5 mg/mL in Tris saline, 0.02 % sodium azide, pH 7.3 with 0.5 % bovine serum albumin.
Preservative:	Sodium azide
Precaution of Use:	This product contains Sodium azide: a POISONOUS AND HAZARDOUS SUBSTANCE which should be handled by trained staff only.
Handling Advice:	Minimize freezing and thawing.
Storage:	-20 °C
Storage Comment:	Aliquot and store at -20°C, with minimal freeze/thawing. A working aliquot may be refrigerated at 4°C for a few weeks and still remain viable.



### Western Blotting

**Image 1.** HEK293 lysate (10  $\mu$ g protein in RIPA buffer) overexpressing Human SLAMF8 with C-terminal MYC tag probed with ABIN1590096 (0.01  $\mu$ g/mL) in Lane A and probed with anti-MYC Tag (1/1000) in lane C. Mock-transfected HEK293 probed with ABIN1590096 (0.01  $\mu$ g/mL) in Lane B. Primary incubations were for 1 hour. Detected by chemiluminescence.