

Datasheet for ABIN1590104  
**anti-LAT2 antibody (Internal Region)**[Go to Product page](#)

## 1 Image

## Overview

Quantity:	100 µg
Target:	LAT2
Binding Specificity:	Internal Region
Reactivity:	Human
Host:	Goat
Clonality:	Polyclonal
Conjugate:	This LAT2 antibody is un-conjugated
Application:	Western Blotting (WB), ELISA

## Product Details

Purpose:	LAT2
Sequence:	RSEKIYQQRS LRED
Isotype:	IgG
Specificity:	Reported variants represent identical protein: NP_115853.2, NP_115852.1, NP_054865.2
Cross-Reactivity:	Human
Purification:	Purified from goat serum by ammonium sulphate precipitation followed by antigen affinity chromatography using the immunizing peptide.
Grade:	Verified

## Target Details

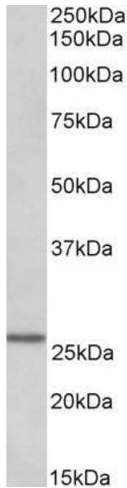
Target:	LAT2
Alternative Name:	LAT2 ( <a href="#">LAT2 Products</a> )
Background:	LAT2, linker for activation of T cells family, member 2, LAB, NTAL, WBSCR15, WBSCR5, WSCR5, Williams-Beuren syndrome chromosomal region 15 protein, Williams-Beuren syndrome chromosomal region 5 protein, linker for activation of B-cells, linker for activation of T cells
Gene ID:	7462
NCBI Accession:	<a href="#">NP_054865</a>
Pathways:	<a href="#">Fc-epsilon Receptor Signaling Pathway</a> , <a href="#">BCR Signaling</a>

## Application Details

Application Notes:	Western Blot: Approx 26 kDa band observed in Human Peripheral Blood Lymphocytes lysates (calculated MW of 26.6 kDa according to NP_054865.2). Recommended concentration: 0.01-0.03 µg/mL. Peptide ELISA: antibody detection limit dilution 1:128000.
Restrictions:	For Research Use only

## Handling

Format:	Liquid
Concentration:	0.5 mg/mL
Buffer:	Supplied at 0.5 mg/mL in Tris saline, 0.02 % sodium azide, pH 7.3 with 0.5 % bovine serum albumin.
Preservative:	Sodium azide
Precaution of Use:	This product contains Sodium azide: a POISONOUS AND HAZARDOUS SUBSTANCE which should be handled by trained staff only.
Handling Advice:	Minimize freezing and thawing.
Storage:	-20 °C
Storage Comment:	Aliquot and store at -20°C, with minimal freeze/thawing. A working aliquot may be refrigerated at 4°C for a few weeks and still remain viable.



Western Blotting

**Image 1.** ABIN1590104 (0.01µg/ml) staining of Human Peripheral Lymphocytes lysate (35µg protein in RIPA buffer). Primary incubation was 1 hour. Detected by chemiluminescence.