

Datasheet for ABIN1590105
anti-CREB3L2 antibody (N-Term)[Go to Product page](#)

2 Images

Overview

Quantity:	100 µg
Target:	CREB3L2
Binding Specificity:	N-Term
Reactivity:	Human
Host:	Goat
Clonality:	Polyclonal
Conjugate:	This CREB3L2 antibody is un-conjugated
Application:	Western Blotting (WB), ELISA, Immunohistochemistry (IHC)

Product Details

Purpose:	CREB3L2
Sequence:	DRKLSLSESEP GDGE
Isotype:	IgG
Specificity:	This antibody is expected to recognize both reported isoforms (NP_919047.2, NP_001240704.1).
Cross-Reactivity:	Human
Purification:	Purified from goat serum by ammonium sulphate precipitation followed by antigen affinity chromatography using the immunizing peptide.
Grade:	Verified

Target Details

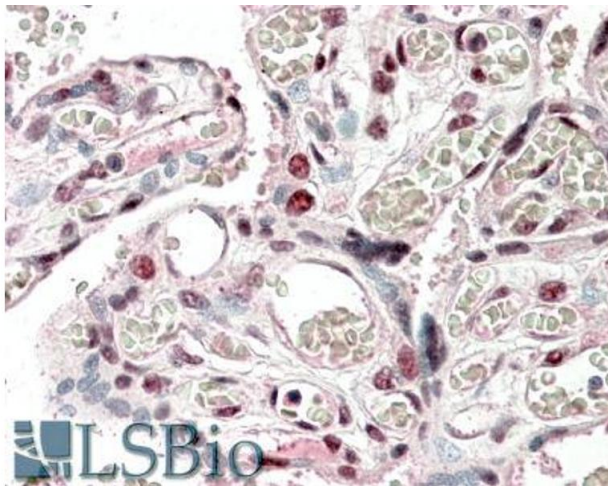
Target:	CREB3L2
Alternative Name:	CREB3L2 (CREB3L2 Products)
Background:	CREB3L2, cAMP responsive element binding protein 3-like 2, BBF2H7, B-ZIB transcription factor, BBF2 human homolog on chromosome 7, FUS/BBF2H7 protein, TCAG_1951439, basic transcription factor 2, cAMP-responsive element-binding protein 3-like protein 2, cy
Gene ID:	64764
NCBI Accession:	NP_919047 , NP_001240704
Pathways:	Thyroid Hormone Synthesis

Application Details

Application Notes:	Immunohistochemistry: In paraffin embedded Human Placenta shows staining in select nuclei. Recommended concentration, 5-10 µg/mL. Western Blot: Approx 26 kDa band observed in Human Placenta lysates (calculated MW of 27.7 kDa according to NP_001240704.1). Recommended concentration: 1-3 µg/mL. Peptide ELISA: antibody detection limit dilution 1:128000.
Restrictions:	For Research Use only

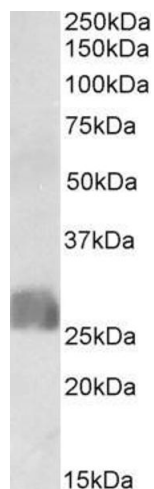
Handling

Format:	Liquid
Concentration:	0.5 mg/mL
Buffer:	Supplied at 0.5 mg/mL in Tris saline, 0.02 % sodium azide, pH 7.3 with 0.5 % bovine serum albumin.
Preservative:	Sodium azide
Precaution of Use:	This product contains Sodium azide: a POISONOUS AND HAZARDOUS SUBSTANCE which should be handled by trained staff only.
Handling Advice:	Minimize freezing and thawing.
Storage:	-20 °C
Storage Comment:	Aliquot and store at -20°C, with minimal freeze/thawing. A working aliquot may be refrigerated at 4°C for a few weeks and still remain viable.



Immunohistochemistry

Image 1. ABIN1590105 (5µg/ml) staining of paraffin embedded Human Placenta. Steamed antigen retrieval with citrate buffer pH 6, AP-staining.



Western Blotting

Image 2. ABIN1590105 (1µg/ml) staining of Human Placenta lysate (35µg protein in RIPA buffer). Primary incubation was 1 hour. Detected by chemiluminescence.