

Datasheet for ABIN1590115
anti-RPA1 antibody (AA 323-337)[Go to Product page](#)

2 Images

Overview

Quantity:	100 µg
Target:	RPA1
Binding Specificity:	AA 323-337
Reactivity:	Human, Mouse
Host:	Goat
Clonality:	Polyclonal
Conjugate:	This RPA1 antibody is un-conjugated
Application:	Western Blotting (WB), ELISA

Product Details

Purpose:	RPA1 / RPA70 (aa323-337)
Sequence:	CKSYEDATKI TVRSN
Isotype:	IgG
Cross-Reactivity:	Human
Purification:	Purified from goat serum by ammonium sulphate precipitation followed by antigen affinity chromatography using the immunizing peptide.
Grade:	Verified

Target Details

Target:	RPA1
---------	------

Target Details

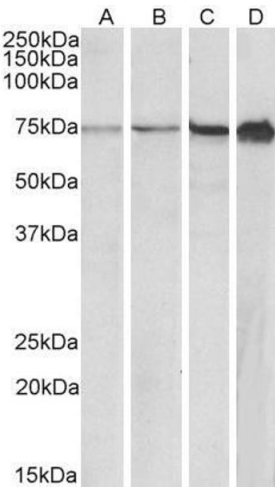
Alternative Name:	RPA1 (RPA1 Products)
Background:	RPA1, replication protein A1, 70 kDa, HSSB, MST075, REPA1, RF-A, RP-A, RPA70, MSTP075, RF-A protein 1, RP-A p70, replication factor A protein 1, replication protein A 70 kDa DNA-binding subunit, single-stranded DNA-binding protein
Gene ID:	6117
NCBI Accession:	NP_002936
Pathways:	Telomere Maintenance , DNA Damage Repair , Mitotic G1-G1/S Phases , DNA Replication , Chromatin Binding , Synthesis of DNA

Application Details

Application Notes:	Western Blot: Approx 70+80 kDa band observed in lysates of cell line HeLa (calculated MW of 68.1 kDa according to NP_002936.1). The upper band likely represents the acetylated protein. A 75 kDa band was observed in several Mouse cell lines and in lysates of Peptide ELISA: antibody detection limit dilution 1:128000.
Restrictions:	For Research Use only

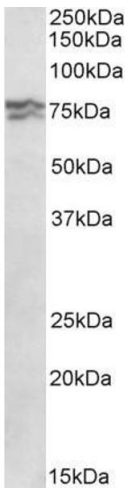
Handling

Format:	Liquid
Concentration:	0.5 mg/mL
Buffer:	Supplied at 0.5 mg/mL in Tris saline, 0.02 % sodium azide, pH 7.3 with 0.5 % bovine serum albumin.
Preservative:	Sodium azide
Precaution of Use:	This product contains Sodium azide: a POISONOUS AND HAZARDOUS SUBSTANCE which should be handled by trained staff only.
Handling Advice:	Minimize freezing and thawing.
Storage:	-20 °C
Storage Comment:	Aliquot and store at -20°C, with minimal freeze/thawing. A working aliquot may be refrigerated at 4°C for a few weeks and still remain viable.



Western Blotting

Image 1. ABIN1590115 (0.5µg/ml) staining of NIH3T3 (A), 3T3L1 (B), Mouse Lymph Node (C) and NSO (D) lysates (35µg protein in RIPA buffer). Primary incubation was 1 hour. Detected by chemiluminescence.



Western Blotting

Image 2. ABIN1590115 (0.3µg/ml) staining of HeLa lysate (35µg protein in RIPA buffer). Primary incubation was 1 hour. Detected by chemiluminescence.