

Datasheet for ABIN1590118
anti-FUT2 antibody (Internal Region)



[Go to Product page](#)

1 Image

Overview

Quantity:	100 µg
Target:	FUT2
Binding Specificity:	Internal Region
Reactivity:	Human
Host:	Goat
Clonality:	Polyclonal
Conjugate:	This FUT2 antibody is un-conjugated
Application:	Western Blotting (WB), ELISA, Immunohistochemistry (IHC)

Product Details

Purpose:	FUT2
Sequence:	HVQQLAKIQ AMWE
Isotype:	IgG
Specificity:	Reported variants represent identical protein: NP_001091107.1, NP_000502.4
Cross-Reactivity:	Human
Purification:	Purified from goat serum by ammonium sulphate precipitation followed by antigen affinity chromatography using the immunizing peptide.
Grade:	Verified

Target Details

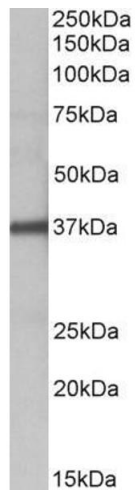
Target:	FUT2
Alternative Name:	FUT2 (FUT2 Products)
Background:	FUT2, fucosyltransferase 2 (secretor status included), B12QTL1, SE, SEC2, Se2, sej, GDP-L-fucose:beta-D-galactoside 2-alpha-L-fucosyltransferase 2, alpha (1,2) fucosyltransferase, alpha(1,2)FT 2, alpha(1,2)FT2, galactoside 2-alpha-L-fucosyltransferase 2,
Gene ID:	2524
NCBI Accession:	NP_000502

Application Details

Application Notes:	Immunohistochemistry: Paraffin embedded Human Placenta. Recommended concentration: 5 µg/mL. Western Blot: Approx 37 kDa band observed in Human Liver lysates (calculated MW of 39.0 kDa according to NP_000502.4. Recommended concentration: 1-3 µg/mL. Primary incubation was 1 hour. Peptide ELISA: antibody detection limit dilution 1:64000.
Restrictions:	For Research Use only

Handling

Format:	Liquid
Concentration:	0.5 mg/mL
Buffer:	Supplied at 0.5 mg/mL in Tris saline, 0.02 % sodium azide, pH 7.3 with 0.5 % bovine serum albumin.
Preservative:	Sodium azide
Precaution of Use:	This product contains Sodium azide: a POISONOUS AND HAZARDOUS SUBSTANCE which should be handled by trained staff only.
Handling Advice:	Minimize freezing and thawing.
Storage:	-20 °C
Storage Comment:	Aliquot and store at -20°C, with minimal freeze/thawing. A working aliquot may be refrigerated at 4°C for a few weeks and still remain viable.



Western Blotting

Image 1. ABIN1590118 (1 μ g/ml) staining of Human Liver lysate (35 μ g protein in RIPA buffer). Detected by chemiluminescence.