



[Go to Product page](#)

Datasheet for ABIN1590123
anti-PLA2G4C antibody (Internal Region)

1 Image

Overview

Quantity:	100 µg
Target:	PLA2G4C
Binding Specificity:	Internal Region
Reactivity:	Human
Host:	Goat
Clonality:	Polyclonal
Conjugate:	This PLA2G4C antibody is un-conjugated
Application:	Western Blotting (WB), ELISA

Product Details

Purpose:	PLA2G4C
Sequence:	NTEVIREYIF DQLR
Isotype:	IgG
Specificity:	This antibody is expected to recognize all reported isoforms (NP_003697.2, NP_001152794.1, NP_001152795.1).
Cross-Reactivity:	Human
Purification:	Purified from goat serum by ammonium sulphate precipitation followed by antigen affinity chromatography using the immunizing peptide.
Grade:	Verified

Target Details

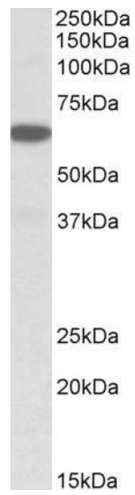
Target:	PLA2G4C
Alternative Name:	PLA2G4C (PLA2G4C Products)
Background:	PLA2G4C, phospholipase A2, group IVC (cytosolic, calcium-independent), CPLA2-gamma, DKFZp586C0423, FLJ42247, FLJ44164, cytosolic phospholipase A2 gamma, phospholipase A2, cytosolic, calcium-independent, gamma, phospholipase A2, group IVC
Gene ID:	8605
NCBI Accession:	NP_003697 , NP_001152794 , NP_001152795
Pathways:	Inositol Metabolic Process , VEGF Signaling

Application Details

Application Notes:	Western Blot: Approx 65 kDa band observed in Human Brain (Hippocampus), Liver, Pancreas, and Spleen lysates (calculated MW of 62.5 kDa according to NP_001152794.1). Recommended concentration: 0.03-0.1 µg/mL. Peptide ELISA: antibody detection limit dilution 1:128000.
Restrictions:	For Research Use only

Handling

Format:	Liquid
Concentration:	0.5 mg/mL
Buffer:	Supplied at 0.5 mg/mL in Tris saline, 0.02 % sodium azide, pH 7.3 with 0.5 % bovine serum albumin.
Preservative:	Sodium azide
Precaution of Use:	This product contains Sodium azide: a POISONOUS AND HAZARDOUS SUBSTANCE which should be handled by trained staff only.
Handling Advice:	Minimize freezing and thawing.
Storage:	-20 °C
Storage Comment:	Aliquot and store at -20°C, with minimal freeze/thawing. A working aliquot may be refrigerated at 4°C for a few weeks and still remain viable.



Western Blotting

Image 1. ABIN1590123 (0.03 μ g/ml) staining of Human Pancreas lysate (35 μ g protein in RIPA buffer). Primary incubation was 1 hour. Detected by chemiluminescence.