

Datasheet for ABIN1590128
anti-ENPP2 antibody (AA 698-712)

3 Images

[Go to Product page](#)

Overview

Quantity:	100 µg
Target:	ENPP2
Binding Specificity:	AA 698-712
Reactivity:	Human
Host:	Goat
Clonality:	Polyclonal
Conjugate:	This ENPP2 antibody is un-conjugated
Application:	Western Blotting (WB), ELISA, Immunohistochemistry (IHC)

Product Details

Purpose:	ENPP2 / AUTOTAXIN (aa698-712)
Sequence:	PDHLTSCVRP DVRVS
Isotype:	IgG
Specificity:	This antibody is expected to recognize iall reported isoforms (NP_006200.3, NP_001035181.1, NP_001124335.1).
Cross-Reactivity:	Human
Purification:	Purified from goat serum by ammonium sulphate precipitation followed by antigen affinity chromatography using the immunizing peptide.
Grade:	Verified

Target Details

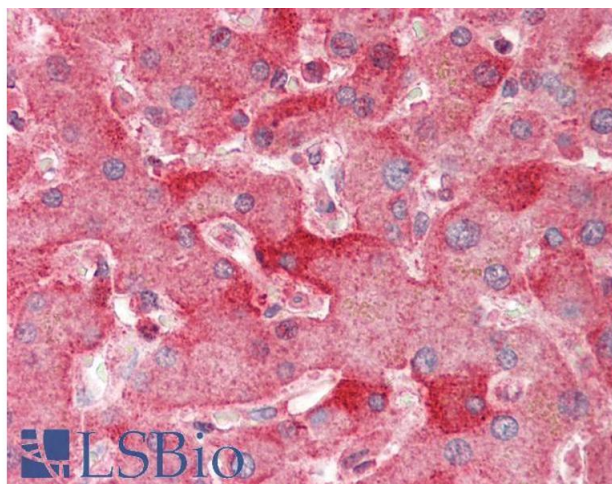
Target:	ENPP2
Alternative Name:	ENPP2 (ENPP2 Products)
Background:	ENPP2, ectonucleotide pyrophosphatase/phosphodiesterase 2, ATX, ATX-X, AUTOTAXIN, LysoPLD, NPP2, PD-IALPHA, PDNP2, E-NPP 2, autotaxin-t, ectonucleotide pyrophosphatase/phosphodiesterase family member 2, extracellular lysophospholipase D, phosphodiesterase
Gene ID:	5168
NCBI Accession:	NP_006200 , NP_001035181 , NP_001124335

Application Details

Application Notes:	Immunohistochemistry: Paraffin embedded Human Liver and Brain (Cortex). Recommended concentration: 5 µg/mL. Western Blot: Approx 100 kDa band observed in Human Placenta lysates (calculated MW of 105 kDa according to NP_006200.3). Recommended concentration: 0.3-1 µg/mL. Primary incubation was 1 hour. Peptide ELISA: antibody detection limit dilution 1:128000.
Restrictions:	For Research Use only

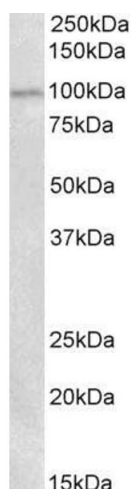
Handling

Format:	Liquid
Concentration:	0.5 mg/mL
Buffer:	Supplied at 0.5 mg/mL in Tris saline, 0.02 % sodium azide, pH 7.3 with 0.5 % bovine serum albumin.
Preservative:	Sodium azide
Precaution of Use:	This product contains Sodium azide: a POISONOUS AND HAZARDOUS SUBSTANCE which should be handled by trained staff only.
Handling Advice:	Minimize freezing and thawing.
Storage:	-20 °C
Storage Comment:	Aliquot and store at -20°C, with minimal freeze/thawing. A working aliquot may be refrigerated at 4°C for a few weeks and still remain viable.



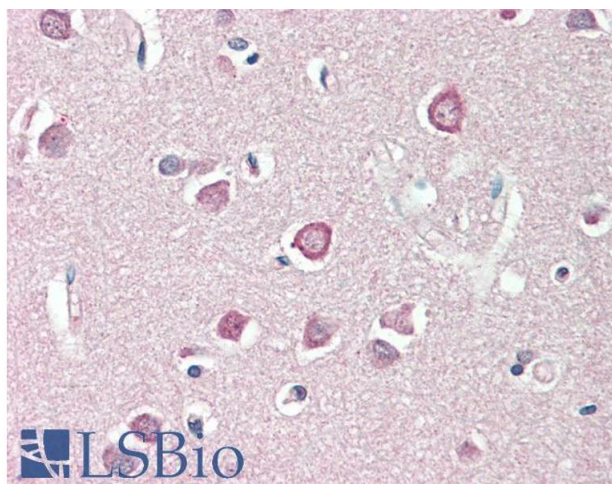
Immunohistochemistry

Image 1. ABIN1590128 (5µg/ml) staining of paraffin embedded Human Liver. Steamed antigen retrieval with citrate buffer pH 6, AP-staining.



Western Blotting

Image 2. ABIN1590128 (0.3µg/ml) staining of Human Placenta lysate (35µg protein in RIPA buffer). Detected by chemiluminescence.



Immunohistochemistry

Image 3. ABIN1590128 (5µg/ml) staining of paraffin embedded Human Cortex. Steamed antigen retrieval with citrate buffer pH 6, AP-staining.